



Roper Crescent, TW16

£1,450,000

This stunning six bedroom, four bathroom modern house was built in 2017 and offers over 2,700 sq.ft of accommodation spread over three floor. The property has been enhanced and extended by the current owners to create a beautiful family home with the added bonuses of off street parking for two cars and a garage.

Roper Crescent is an incredible location, just off The Avenue in Lower Sunbury. Sunbury Park, the 'Walled Garden', the local village shops and the River Thames are all close by. Sunbury station which provides a direct service into London Waterloo is approximately half a mile away.

Features

- Detached
- Six Bedrooms
- Four Bathrooms
- Utility Room
- Garage
- Off-Street Parking



Roper Crescent, TW16

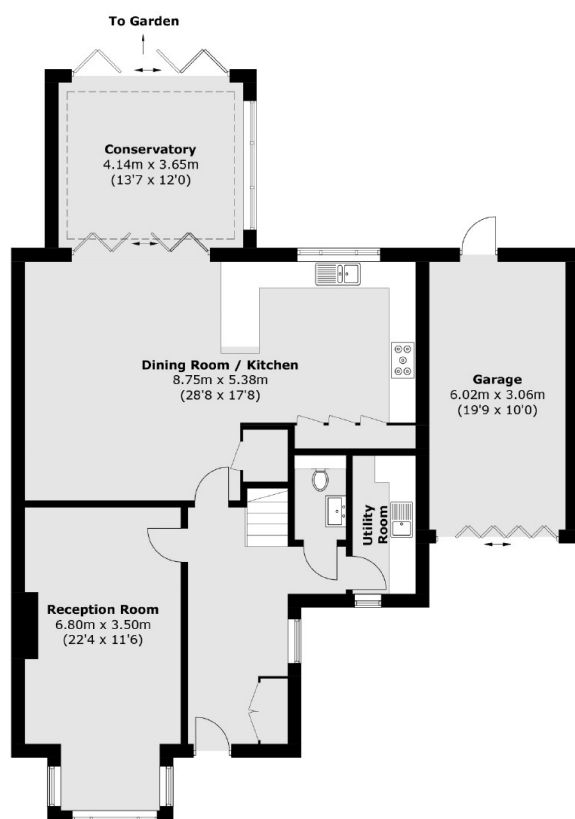
This wonderful home provides families with a flexible layout. On the ground floor there is a large front reception room with a feature fireplace and a spacious open plan kitchen living space which leads to the conservatory. The ground floor has the added bonus of a utility room and a WC.

On the first floor there is a generous master bedroom with a balcony, dressing area and an en suite bathroom. There are two additional double bedrooms, a family bathroom and a study/nursery. On the top floor there are two further double bedrooms and two bathrooms.

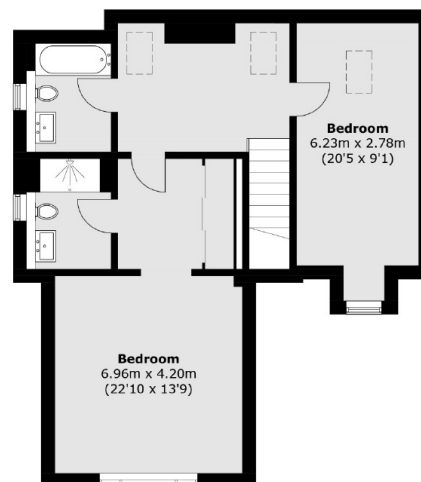
To the rear of the property there is a landscaped garden with an extended patio which is perfect for entertaining friends and family. To the front there is off street parking for two cars and access to the garage.



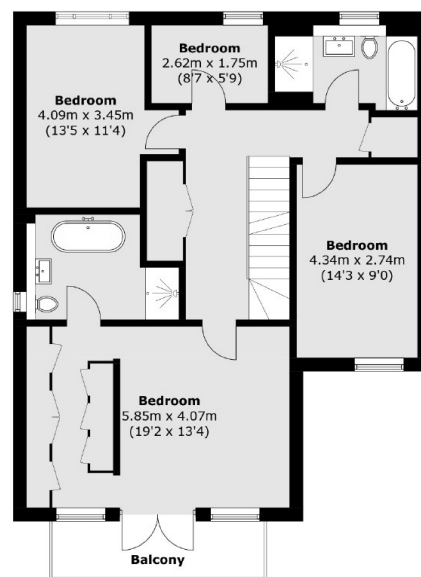
Roper Crescent, Sunbury-On-Thames, TW16



Ground Floor



Second Floor



First Floor

Approx Internal Area: 258.1 sq. m (2,778.1 sq. ft)
 Garage: 19.0 sq. m (204.5 sq. ft)
 Total: 277.1 sq. m (2,982.6 sq. ft)
 Balcony area : 6.0 sq. m (64.6 sq. ft)