

## Metcalf Road, TW15

### £499,950

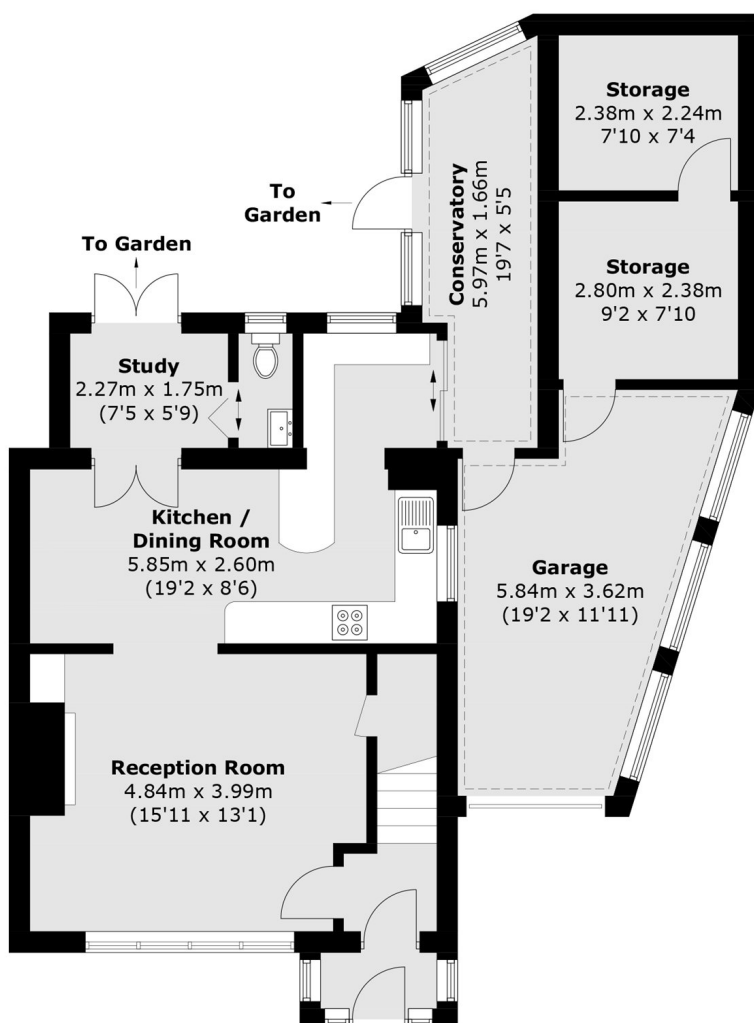
A three bedroom semi-detached house offering a fantastic opportunity to secure a family home with excellent potential (SSTP). Early viewings are recommended to avoid disappointment

Metcalf Road, Ashford Surrey is a suburban area about 0.81 mile from Ashford station and the town centre, offering easy access to shops, schools, and regular rail services to London and nearby towns.

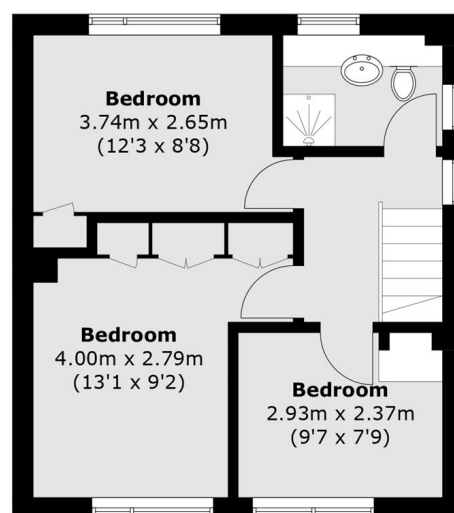
### Features

- Semi-Detached
- Driveway
- Three Bedrooms
- Private Garden
- Conservatory
- Garage

# Metcalf Road, Ashford, TW15



**Ground Floor**



**First Floor**

Total area (approx.): 133.0 sq. m (1,431.6 sq. ft)  
(Including Garage)