



Manor Lane, TW16

£599,950

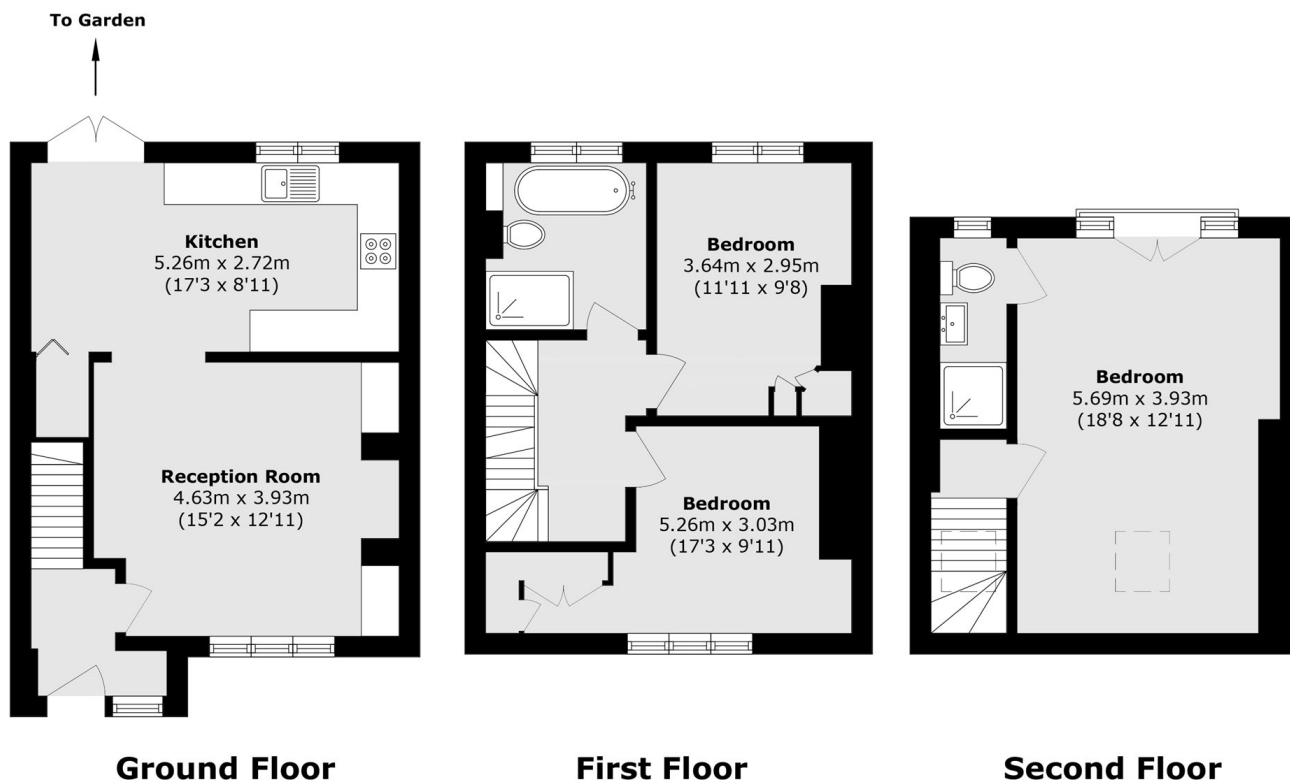
A beautifully finished three bedroom mid terrace home which features a stylish loft conversion. This property comes with the additional bonuses of off street parking (with an electric charger) and a large and private rear garden. There is also further potential to extend (STPP).

The property is in a wonderful location on Manor Lane between French Street and The Avenue. Everything Lower Sunbury has to offer is close by including The River Thames, Sunbury Park and the popular Chennestone School.

Features

- Three Bedrooms
- Modern property
- Mid Terrace
- Loft Converted
- Off-Street Parking
- Private Garden

Manor Lane, Sunbury-On-Thames, TW16



Total area (approx.): 101.8 sq. m (1095.7 sq. ft)