



## Heath Grove, TW16

### £355,000

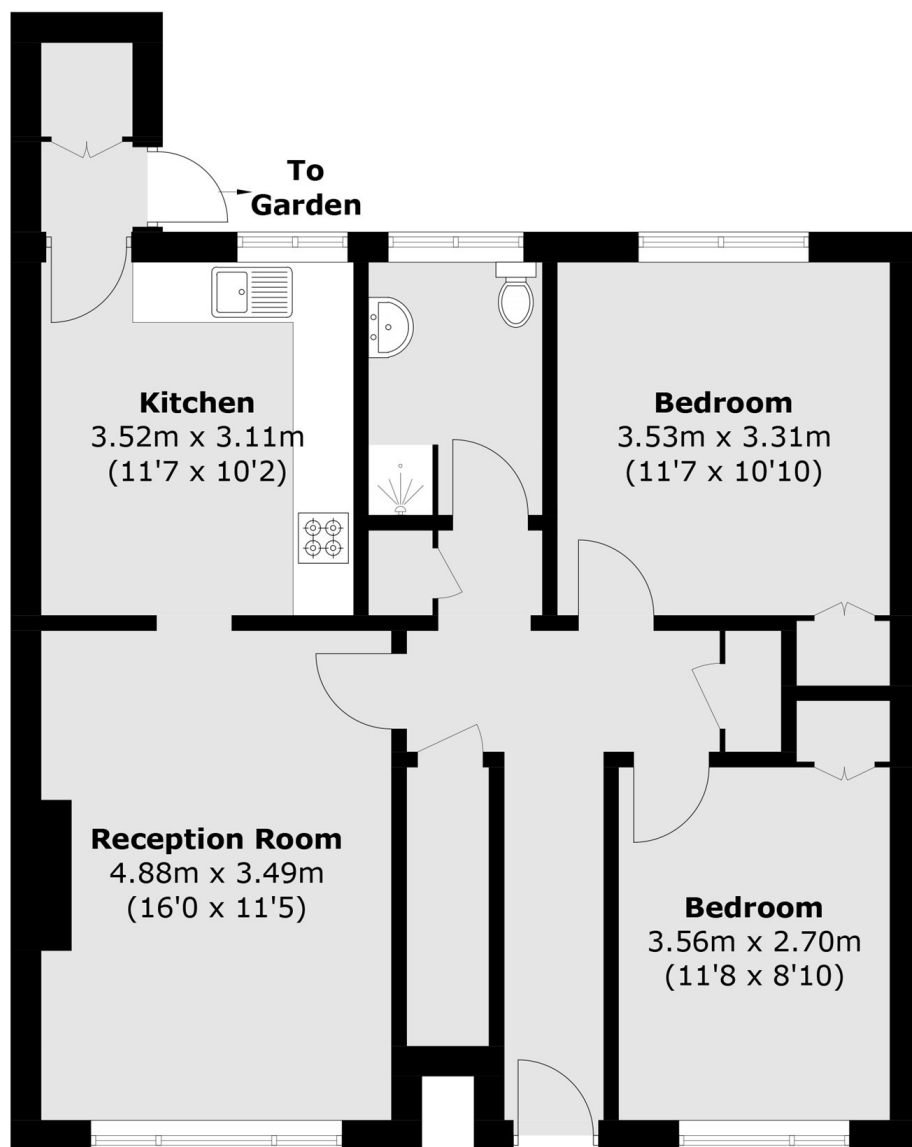
A two bedroom ground floor maisonette with an eat in kitchen, a private rear garden and a garage. The property is smartly presented throughout and would be ideal as a first home or for a buyer looking to downsize.

Heath Grove is a great location, this quiet cul-de-sac is located off Vicarage Road. The shops at Sunbury Cross are just around the corner and Sunbury Station which provides a direct service into London Waterloo is approximately a quarter of a mile away.

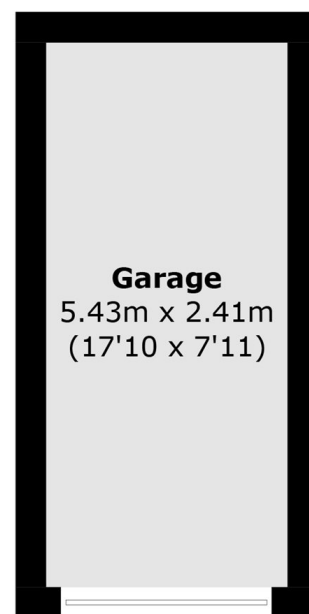
### Features

- Maisonette
- Ground Floor
- Two Bedrooms
- Eat In Kitchen
- Private Garden
- Garage

# Heath Grove, Sunbury-On-Thames, TW16



## Ground Floor



(Not Shown In Actual  
Location / Orientation)

Total area (approx.): 73.6 sq. m (792.2 sq. ft)  
Garage (approx.): 13.1 sq. m (141.0 sq. ft)