



## Harfield Road, TW16

£1,150,000

A four bedroom detached house with off-street parking, a garage and a large mature west facing garden. This spacious family home is filled with charm and potential and is being sold with the added benefit of no forward chain.

Harfield Road is a wonderful location on the borders of Sunbury and Hampton with the River Thames just at the end of the road. Hampton Station is approximately 1 mile away and provides a direct service into London Waterloo.

### Features

- Detached
- Four Bedrooms
- Two Reception Rooms
- Downstairs W.C.
- Amazing Rear Garden
- No Forward Chain



## Harfield Road, TW16

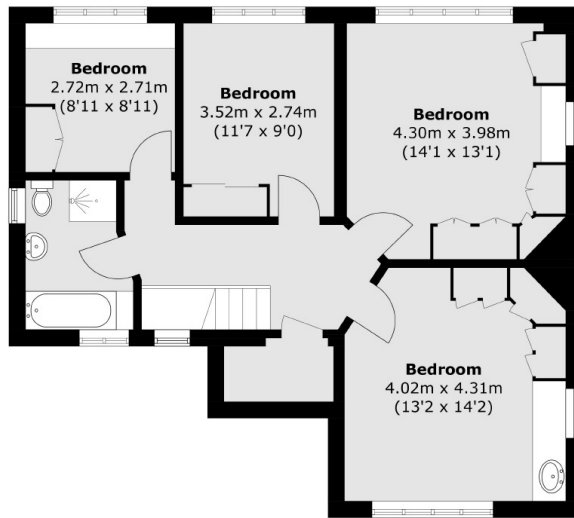
On the ground floor there is a welcoming entrance hallway, a spacious dual aspect reception room, a second reception room, a kitchen breakfast room and a W.C.

On the first floor there are four bedrooms, all with built in storage and a family bathroom with a bath and separate walk in shower.

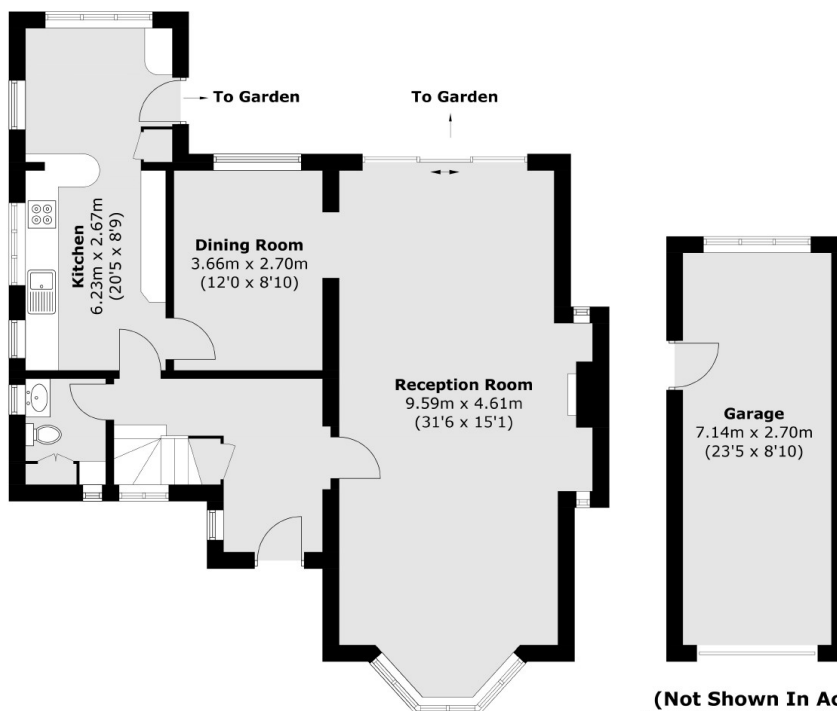
To the rear of the house is an incredible mature garden with a large patio area, lawn and mature plants and borders.



# Harfield Road, Sunbury-On-Thames, TW16



**First Floor**



**Ground Floor**

Total area (approx.): 150.8 sq. m (1,623.2 sq. ft)  
Garage: 19.4 sq. m (208.8 sq. ft)