



Bramwell Close, TW16

£750,000

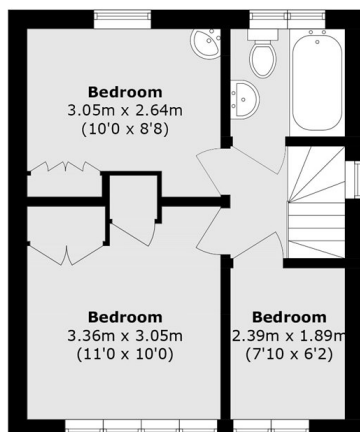
A stunning three bedroom, two bathroom detached house with gated off street parking. The property has been extended and updated by the current owners to create a the perfect family home. The house has the added bonus of backing on to the grounds of The Salvation Army Headquarters.

Bramwell Close is an amazing location on the borders of Sunbury and Hampton with the River Thames close by. Both Hampton and Sunbury stations are approximately 1 mile away and provides a direct service into London Waterloo.

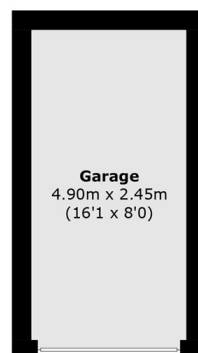
Features

- Detached
- Three Bedrooms
- Two Bathrooms
- Private Garden
- Gated Driveway
- Excellent Condition

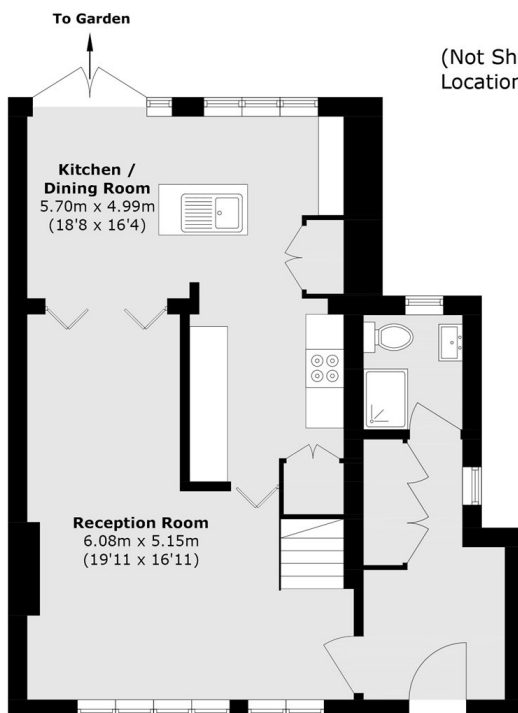
Bramwell Close, Sunbury-On-Thames, TW16



First Floor



(Not Shown in Actual
Location / Orientation)



Ground Floor

Total area (approx.): 90.7 sq. m (976.2 sq. ft)
Garage area (approx.): 12.0 sq. m (129.1 sq. ft)