

Elizabeth Gardens, TW16

£580,000

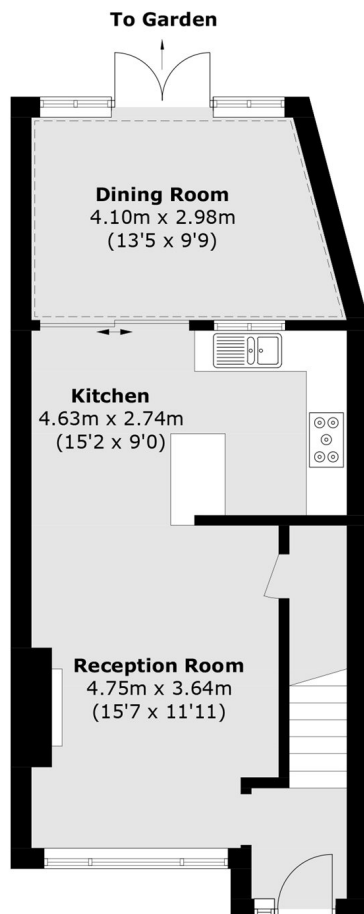
A spacious three double bedroom, two bathroom family home with a private rear garden and a garage. This property is filled with light and is an ideal first family home.

Elizabeth Gardens is a sought after location with the River Thames, riverside pubs and local village shops all just around the corner. Sunbury Station which provides a direct service into Waterloo is approximately 1 mile away.

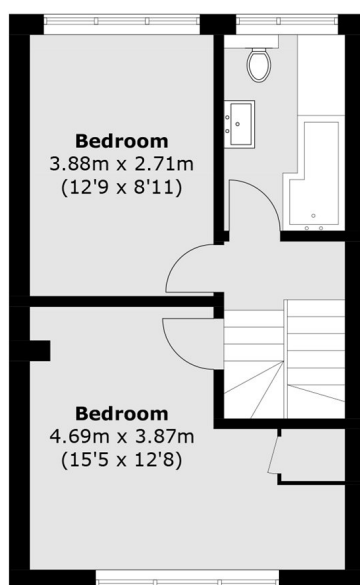
Features

- Three Double Bedrooms
- Two Bathrooms
- Extended Living Space
- Private Rear Garden
- Garage
- Excellent Location

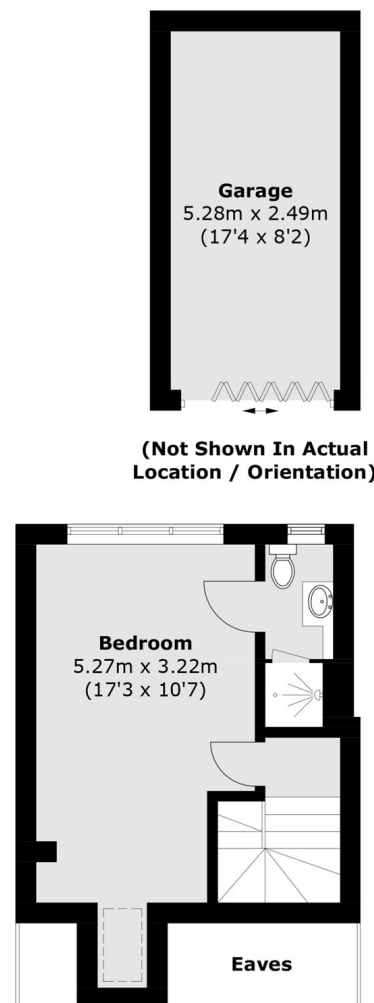
Elizabeth Gardens, Sunbury-On-Thames, TW16



Ground Floor



First Floor



Second Room

Total area (approx.): 110.8 sq. m (1,192.7 sq. ft)
(Excluding Eaves)
Garage: 13.5 sq. m (145.3 sq. ft)