



Fairfield Place, KT1

£645,000

A beautifully presented and rarely available double fronted Victorian detached house, offering three bedrooms, two reception rooms, and a spacious kitchen/breakfast room. Offered with no onward chain, the house is ready to move straight into, while also providing an excellent opportunity for the new owners to update and style to their own taste.

Fairfield Place is a quiet street just off Mill Street in Kingston, ideally positioned less than half a mile from Kingston town centre, with Fairfield Recreational Park located at the end of the road.

Features

- Detached Victorian House
- Three Bedrooms
- Two Reception Rooms
- Kitchen/Breakfast Room
- No Onward Chain
- Residents Parking



Fairfield Place, KT1

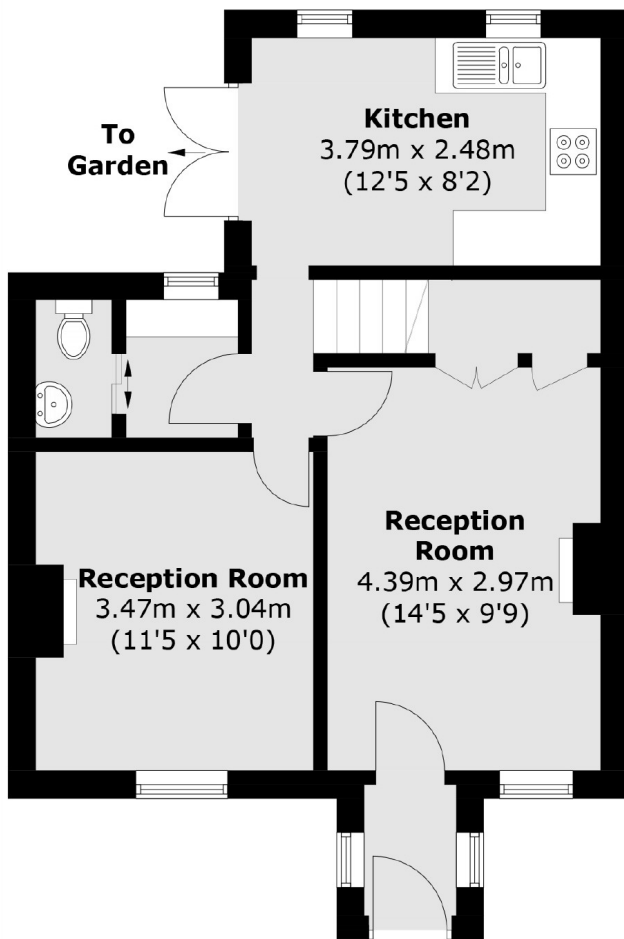
The two reception rooms are positioned at the front of the house, both full of period charm with features such as fireplaces, sash windows, and attractive wood flooring. To the rear is a spacious kitchen/breakfast room with direct access to the garden, while a guest WC completes the ground floor.

Upstairs, there are three well proportioned bedrooms, each large enough to accommodate a double bed and all with double-glazed sash-style windows. The family bathroom is also located on this floor.

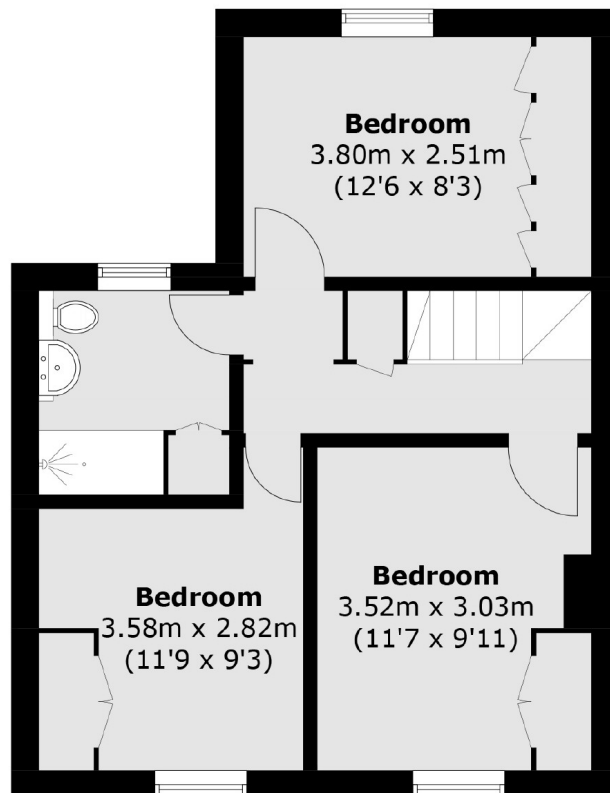
Outside, the property benefits from a pretty front garden with a low level brick wall, while to the rear is a private garden with useful rear access. The garden is designed with an attractive patterned brick patio and bordered with mature flowers and shrubs.



Fairfield Place, Kingston Upon Thames, KT1



Ground Floor



First Floor

Total area (approx.): 85.9 sq. m (924.6 sq. ft)