



Queenshurst Square, KT2

£385,000

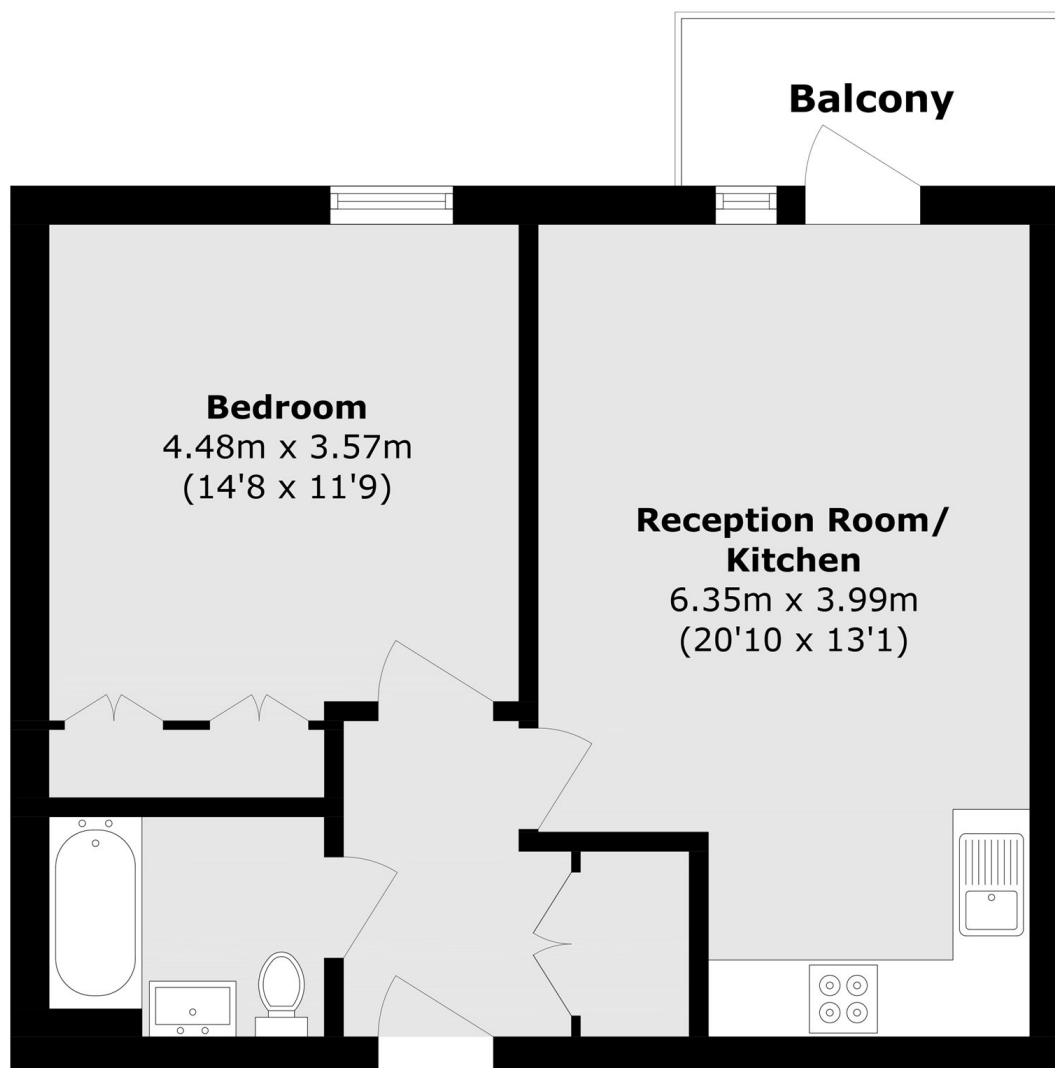
An executive west facing, one bedroom apartment on the fifth floor of Hamond Court, Queenshurst Square, built by Berkeley Homes. Offering 541 sq.ft of bright living space, it features an open plan kitchen/living area leading to a private balcony with far reaching views, a double bedroom, luxury bathroom, utility/storage room and video entry system.

Residents enjoy a 24 hour concierge, duplex health suite, cinema room, media/meeting room, lift access and landscaped courtyard gardens with water features. Ideally located close to Kingston's historic town centre, with excellent transport links to London Waterloo and you will find Richmond Park, Bushy Park and Hampton Court Palace nearby.

Features

- Excellent Location
- Modern Specification
- Fifth Floor
- Balcony
- Residents Health Suite
- Fitted Wardrobes

Queenshurst Square, Kingston Upon Thames, KT2



Total area (approx.): 48.6 sq. m (523.1 sq. ft)

Balcony area (approx.): 4.1 sq. m (44.1 sq. ft)