



Chivenor Grove, KT2

£2,950 Per calendar month

A wonderful four-bedroom family townhouse tucked away in a superb and sought-after location, this beautifully presented four-bedroom family home offers four bedrooms, three bathrooms and a stunning balcony with river views.

Features

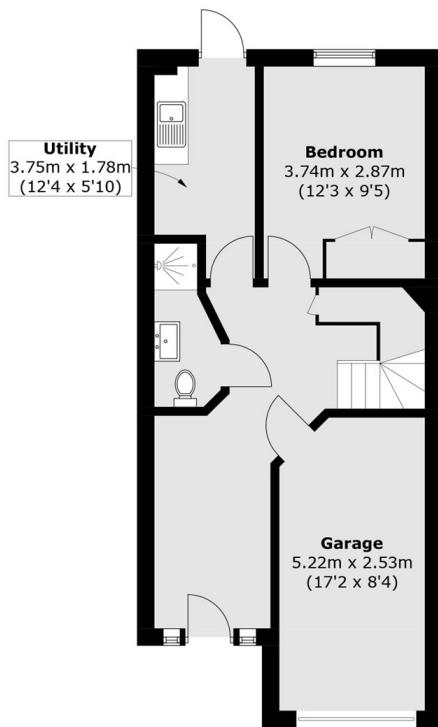
- Townhouse
- Four Bedroom
- Three Bathroom
- Off street parking
- Garage
- Balcony with river views
- Private Garden



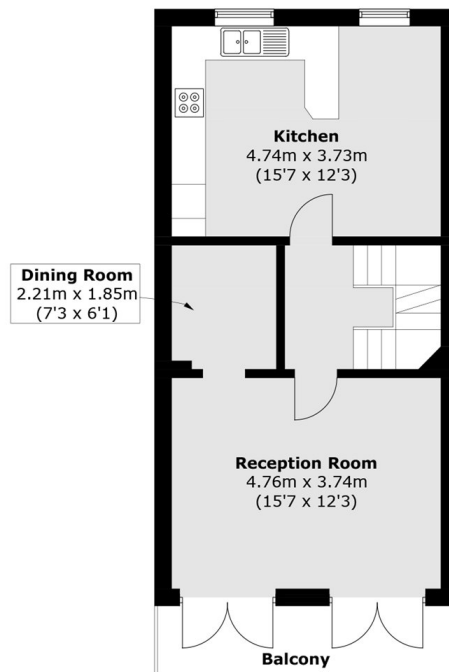
Chivenor Grove, KT2



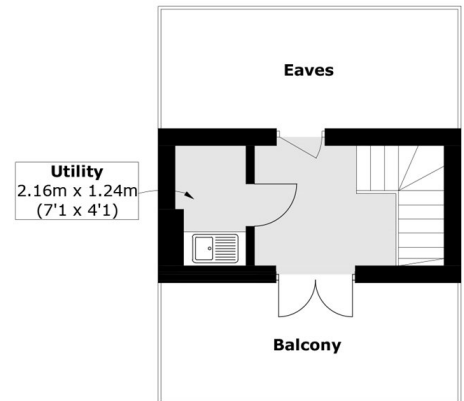
Chivenor Grove, Kingston Upon Thames, KT2



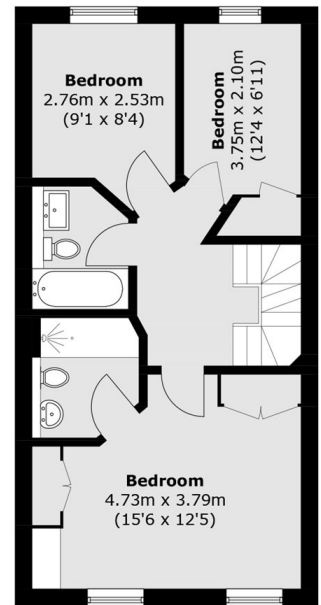
Ground Floor



First Floor



Third Floor



Second Floor

Total area (approx.): 157.2 sq. m (1692.0 sq. ft)
(Including Garage / Excluding Eaves)
Balconies: 17.4 sq. m (187.3 sq. ft)