



## Kingsworthy Close, KT1

£350,000

Set within a popular gated residential development is this well presented ground floor apartment offering approximately 550 sq.ft of accommodation. The property would suit families, professionals, first time buyers, investors or a buyer looking for a pied-à-terre.

Kingsworthy Close is ideally located for Fairfield Park and Athelstan Recreational Ground and is favourably positioned for the highly regarded St Johns Primary School. Both Kingston Station and Kingston town centre providing extensive shopping and leisure amenities including both High Street and artisan shops, independent coffee shops and fabulous bars and restaurants are less than a mile away.

### Features

- Two Double Bedrooms
- Reception Room
- Open Plan Fitted Kitchen
- Modern Family Bathroom
- Patio & Communal Gardens
- Allocated Parking Space



## Kingsworthy Close, KT1

The property is entered via a communal entrance hall with entryphone system leading to the property.

The ground floor accommodation consists of an entrance hall with a storage cupboard, a reception room incorporating distinct living and dining areas with uPVC double glazed French doors leading to a private patio garden, an open plan fitted kitchen with integrated appliances, two double bedrooms with fitted wardrobes and a modern family bathroom with a storage cupboard.

The property benefits from uPVC double glazing, gas central heating, wooden flooring and a long leasehold interest.

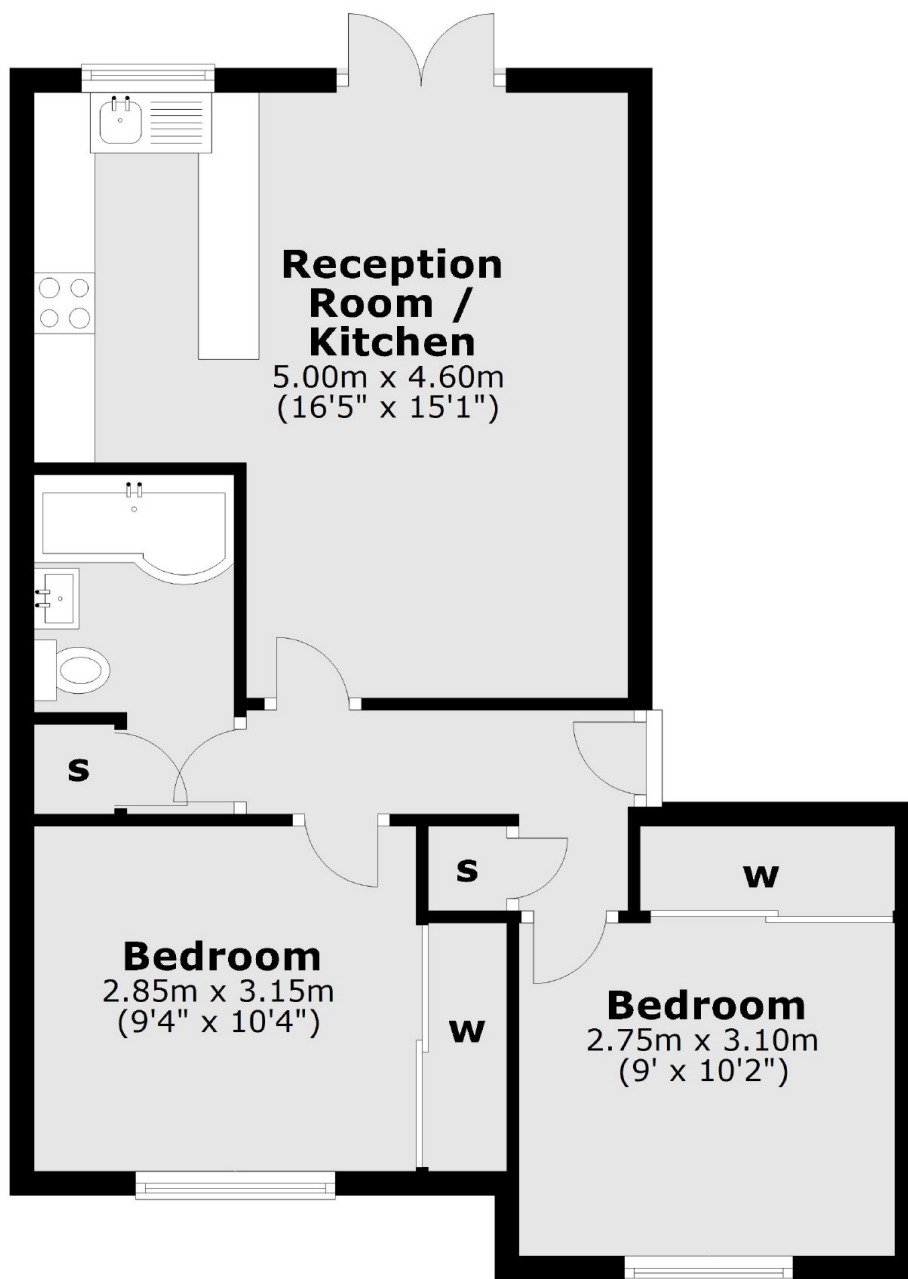
Outside to the front is a private patio garden with direct access to well maintained communal gardens. Hardstanding provides allocated off-street parking for residents and visitors.





# Kingsworthy Close, Kingston Upon Thames, KT1

## Ground Floor



Total area: approx. 50.6 sq. metres (544.5 sq. feet)