



Royal Quarter, KT2

£450,000

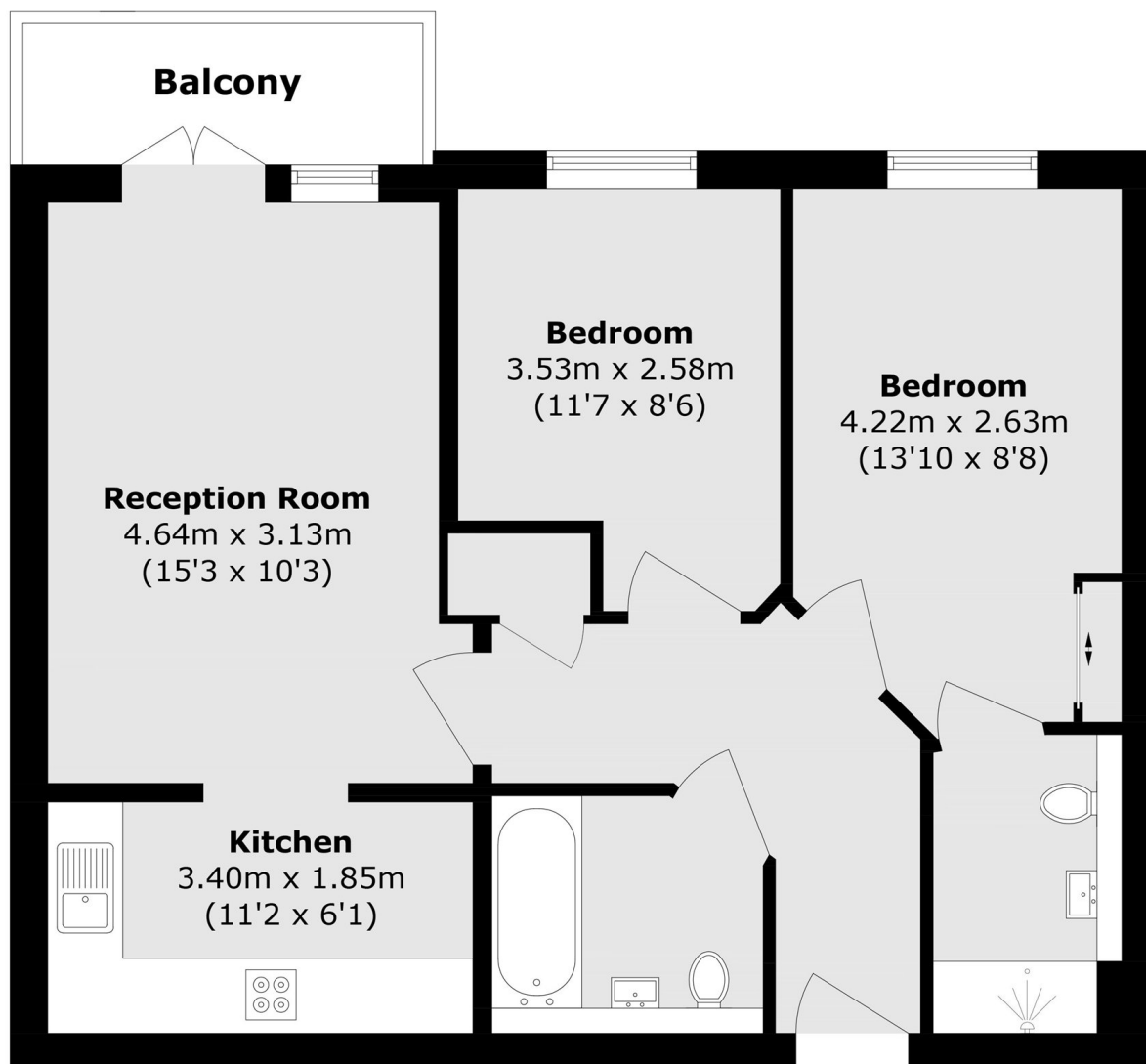
A beautiful two bedroom apartment on the third floor of the sought after Royal Quarters Development with 24/7 concierge, residents' gym, underground parking and lift access. The apartment features a spacious entrance hall, a principal bedroom with en suite and built in wardrobes. There is also a second double bedroom filled with natural light and a modern family bathroom, large open plan living and kitchen area with integrated appliances, ample storage and a private balcony.

Bramber House forms part of the Royal Quarter development on Seven Kings Way. The location is superb for enjoying everything Kingston has to offer, just 100 yards from the town centre and Kingston Station and only 350 yards from Canbury Gardens and the River Thames.

Features

- Third Floor
- Two Double Bedrooms
- Two Bathrooms
- Excellent Location
- Concierge
- Residents Gym

Royal Quarter, Kingston Upon Thames, KT2



Total area (approx.): 57.7 sq. m (621.0 sq. ft)

Balcony area (approx.): 3.6 sq. m (38.7 sq. ft)