



Richmond Road, KT2

£425,000

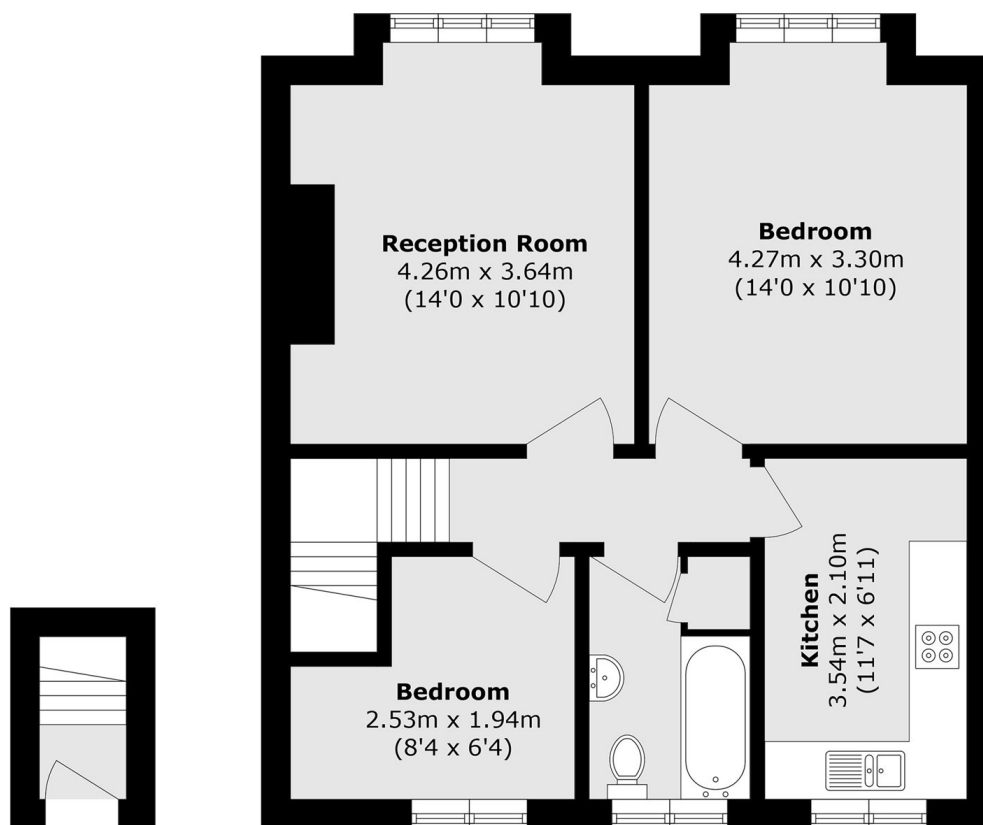
A purpose built two bedroom, top floor, apartment in excellent condition throughout. The property benefits from a large lounge, modern fitted separate kitchen, modern bathroom suite, double glazing throughout and gas central heating. The property further benefits from a low service charge, loft storage and allocated parking.

Situated on Ham Parade with its day to day shopping facilities and close to both Kingston and Richmond town centres with easy access to train lines to London Waterloo. The area is well known for its excellent local educational facilities, while nearby recreational pursuits include Ham Common, the River Thames, Richmond Park, Ham Lands, and a choice of fine bars and restaurants.

Features

- Top Floor
- Excellent Condition
- Parking
- Two Double Bedrooms
- Low Service Charge
- Excellent Location

Richmond Road, Kingston Upon Thames, KT2



First Floor

Second Floor

Total area (approx.): 55.1 sq. m (593.1 sq. ft)