



Wolsey Drive, KT2

£3,350 Per calendar month

A modern three bedroom family home in North Kingston close to many outstanding schools. The house has a private driveway, double reception room and three bedrooms.

The house is set on a popular road with local amenities found on Upper Ham Road and Richmond Road. There is a fine selection of first class schools locally along with the River Thames, Hawker leisure centre and the fantastic open spaces of Ham Common and Richmond Park.

Features

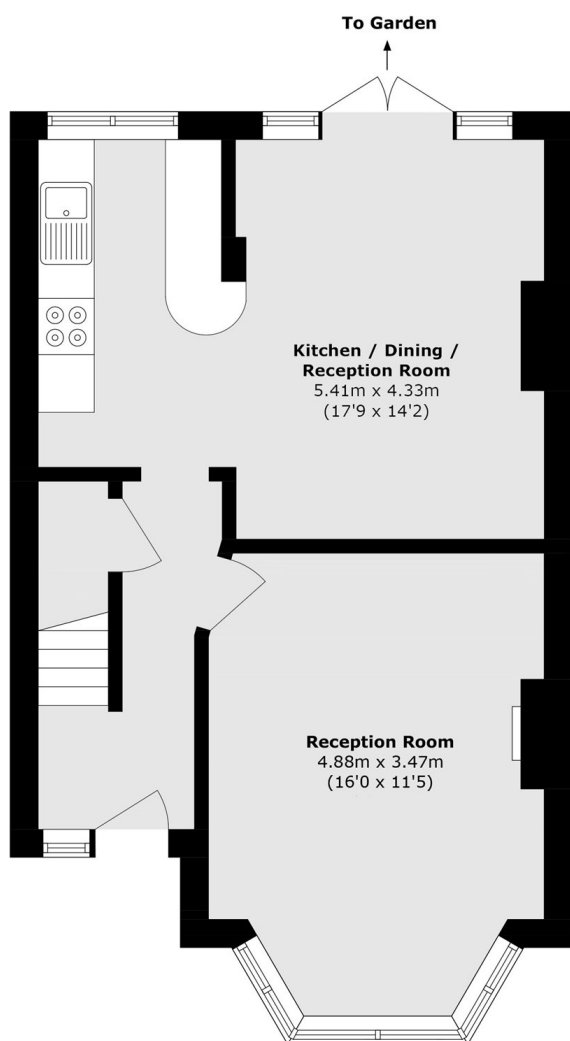
- Three Bedrooms
- Modern Kitchen
- Separate Living Room
- Private Rear Garden
- Off Street Parking
- Close to Outstanding Schools



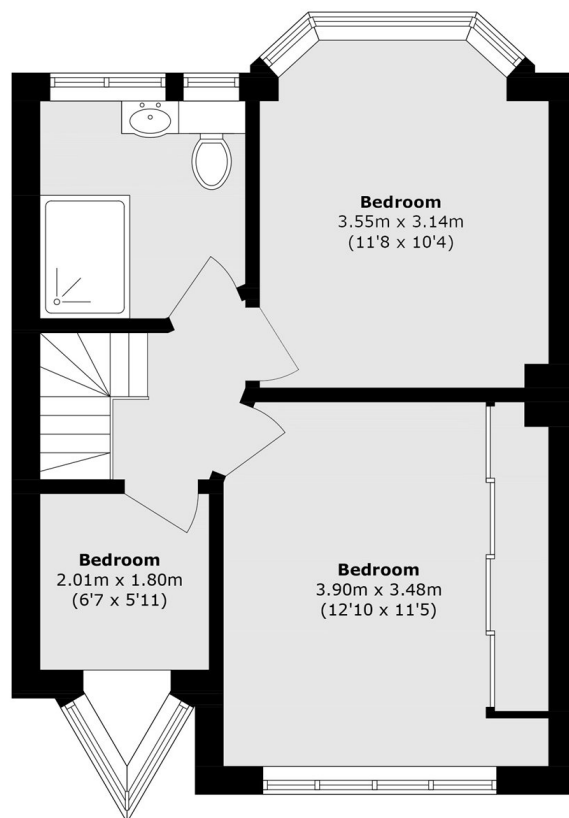
Wolsey Drive, KT2



Wolsey Drive, Kingston Upon Thames, KT2



Ground Floor



First Floor

Total area (approx.): 84.4 sq. m (908.4 sq. ft)