



Bramshaw Rise, KT3

£2,600 Per calendar month

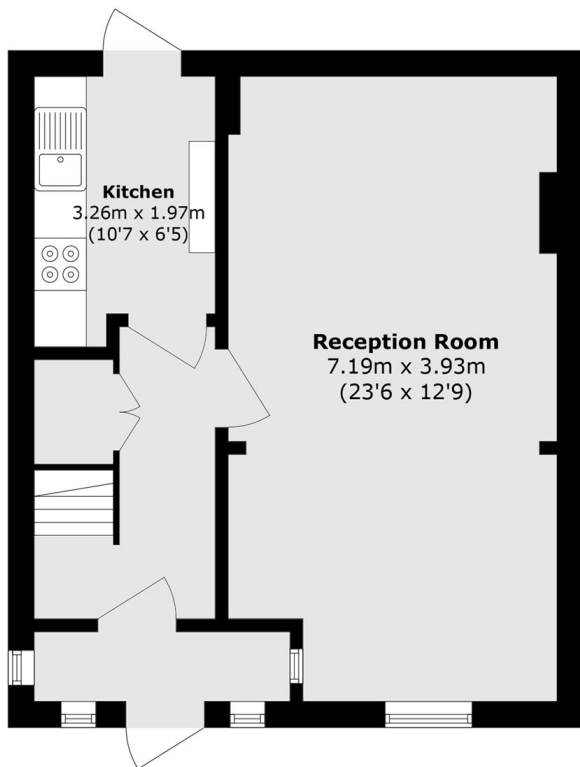
This newly refurbished 3 bed semi-detached house situated in a quiet residential area benefitting a beautiful large garden and off-street parking. This property offers plenty of living space downstairs, a modern kitchen, family bathroom and three well sized bedrooms.

This property is located in a quiet residential area and close to new Malden high street.

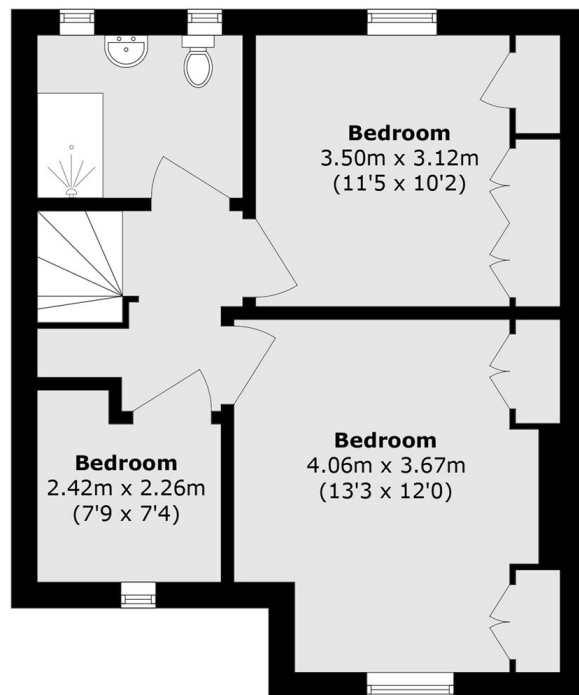
Features

- 3 Double Bedroom
- Semi-Detached House
- Separate modern kitchen
- Double Reception Room
- Large private garden
- Private driveway

Bramshaw Rise, New Malden, KT3



First Floor



Second Floor

Total area (approx.): 84.2 sq. m (906.3 sq. ft)