



Gibbon Road, KT2

£1,075,000

An attractive four bedroom, halls adjoining, period, semi-detached home arranged over two floors. The ground floor has been extended to provide three reception rooms, with a particularly impressive, larger than average rear reception space that is open plan to a beautiful dining area featuring a vaulted ceiling, four large skylight windows and exposed timber beams. A further notable benefit is the off-street parking to the front of the property.

Ideally positioned on Gibbon Road in North Kingston, an area highly regarded by families. The property is conveniently located just over 500 yards from both Canbury Gardens, which provides direct access to the River Thames and Kingston Station, situated adjacent to the vibrant town centre with its wide range of shops, restaurants and amenities.

Features

- Halls Adjoining
- Semi-Detached Period Home
- Four Bedrooms
- Two Bathrooms
- Three Reception Rooms
- Off-Street Parking



Gibbon Road, KT2

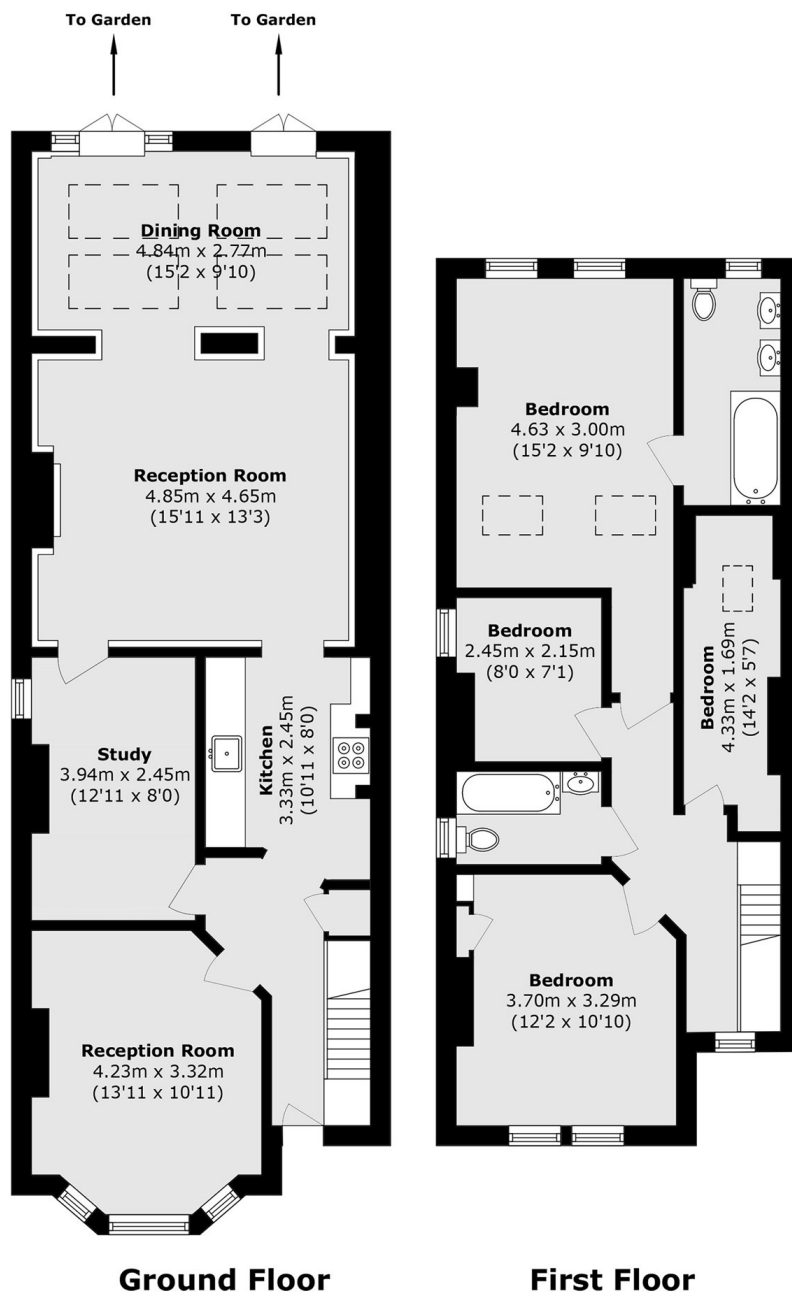
To the front is a pretty bay fronted reception room featuring sash windows, a period style fireplace and retained character details including a picture rail and ornate cornicing. Located behind this is a cosy snug, continuing the period theme with further original features and a fireplace. To the rear is a truly impressive lounge and open plan dining room, a larger than average space that is ideal for both family living and entertaining. Completing the ground floor is a stylish and contemporary kitchen.

On the first floor to the rear is the principal bedroom suite, comprising an impressive double bedroom with an en suite bathroom. There is a further double bedroom to the front, while the remaining two single bedrooms and a family bathroom complete the first floor.

Externally, the property benefits from off-street parking to the front. To the rear is a secluded, low maintenance garden with both patio and lawn areas, attractively complemented by a period brick boundary wall along the left hand side.



Gibbon Road, Kingston Upon Thames, KT2



Total area (approx.): 136.9 sq. m (1473.6 sq. ft)

Dexters

Kingston
4 Wood Street
Kingston Upon Thames
KT1 1TG
Sales
020 8546 3555

Energy Rating: F. We aim to make our particulars both accurate and reliable. However they are not guaranteed; nor do they form part of an offer or contract. If you require clarification on any points then please contact us, especially if you're traveling some distance to view. Please note that appliances and heating systems have not been tested and therefore no warranties can be given as to their good working order.

 **RICS** | Regulated
Estate Agent
and Letting Agent

dexters.co.uk