



Lime Grove, KT3

£4,300 Per calendar month

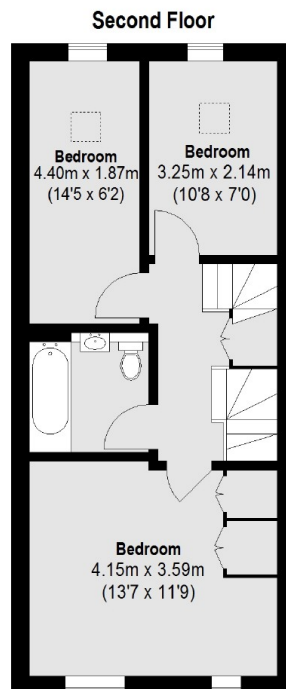
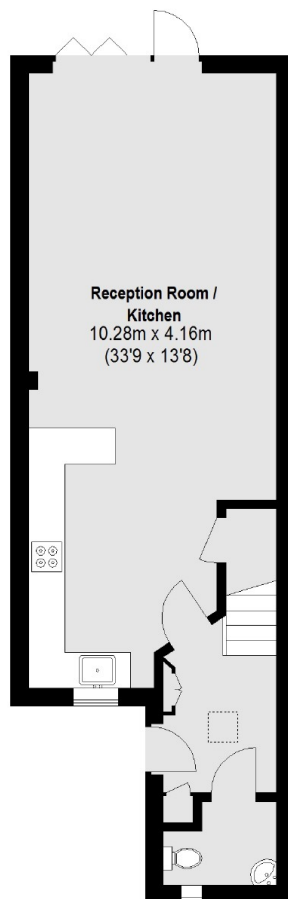
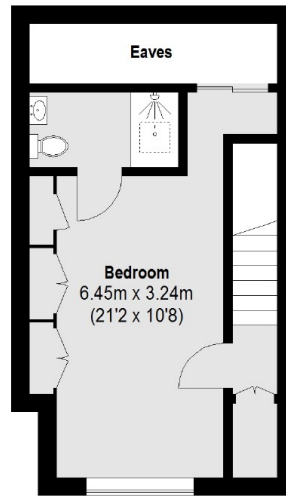
A substantial four double bedroom, new build home located in an extremely sought after location in New Malden. This property has modern and stylish interiors throughout, superb proportions and with a good size garden this would make the perfect family home.

Conveniently located close to New Malden High Street with it's array of shops, cafes and amenities, as well as New Malden station with fast and frequent links into Central London. The area is well served by fantastic local schools and lovely open spaces.

Features

- Four Bedrooms
- Off Street Parking
- Good Size Garden
- New To The Rental Market
- Fantastic Location
- Outstanding School Catchment

Lime Grove, New Malden, KT3



Ground Floor

Total area (approx.): 118.58 sq. m (1276 sq. ft) (Excluding Eaves)

Dexters

Kingston
4 Wood Street
Kingston Upon Thames
KT1 1TG
Lettings
020 8546 3003

Energy Rating: B. We aim to make our particulars both accurate and reliable. However they are not guaranteed; nor do they form part of an offer or contract. If you require clarification on any points then please contact us, especially if you're traveling some distance to view. Please note that appliances and heating systems have not been tested and therefore no warranties can be given as to their good working order.

 **RICS** | Regulated
Estate Agent
and Letting Agent

dexters.co.uk