



## Surbiton Road, KT1

### £650,000

A genuinely unique and exceptionally spacious three bedroom apartment that has recently been renovated, benefiting from a private entrance and accommodation arranged over three floors. Offering just under 1,600 sq.ft of well proportioned living space, the apartment provides almost double the accommodation typically found in similarly priced local cottages.

Perfectly located in between Surbiton and Kingston, offering easy access to a range of amenities from the local High Street of Surbiton or Central Kingston with its array of bars, restaurants and shops. Surbiton Station is just over half a mile from the apartment, which provides excellent links into and out of London.

### Features

- Three Bedrooms
- Just Under 1,600 sq.ft
- High Specification
- Close To Shops
- Close To River Thames
- No Onward Chain



## Surbiton Road, KT1

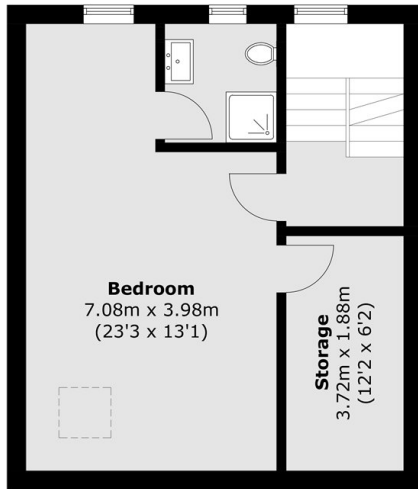
The apartment is accessed via its own private entrance, opening into a spacious entrance hall with stairs rising to the first floor. Here you will find a generous living room, a modern kitchen/breakfast room and the first of the three bathrooms.

The bedroom accommodation is arranged across the second and third floors. The second floor offers two well proportioned double bedrooms, one of which benefits from an en suite bathroom. The top floor is dedicated to a superb principal bedroom suite, complete with an en suite bathroom and walk in storage/dressing room.

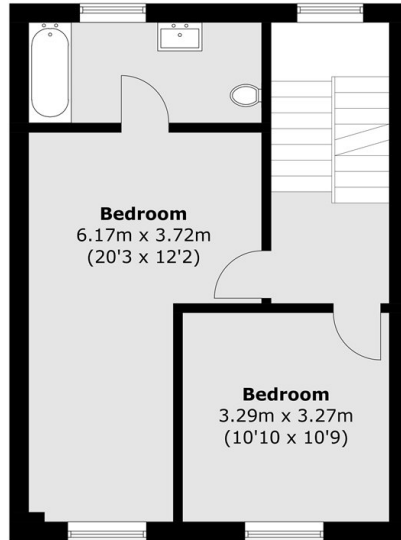
Ideally positioned on Surbiton Road, the apartment enjoys immediate access to a range of local shops and restaurants right on the doorstep.



# Surbiton Road, Kingston Upon Thames, KT1



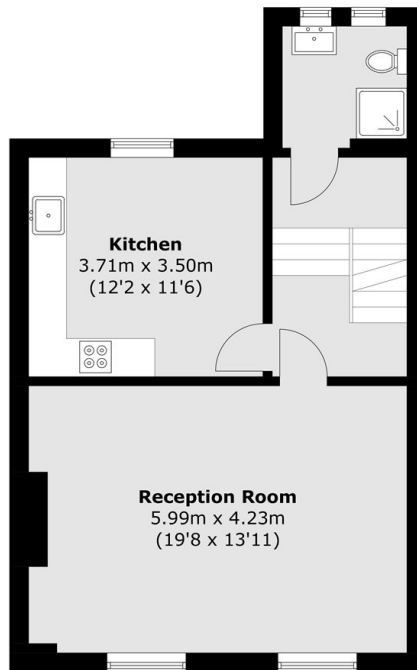
**Third Floor**



**Second Floor**



**Ground Floor**



**First Floor**

Total area (approx.): 146.6 sq. m (1,577.9 sq. ft)