



## Wittering Close, KT2

### £500,000

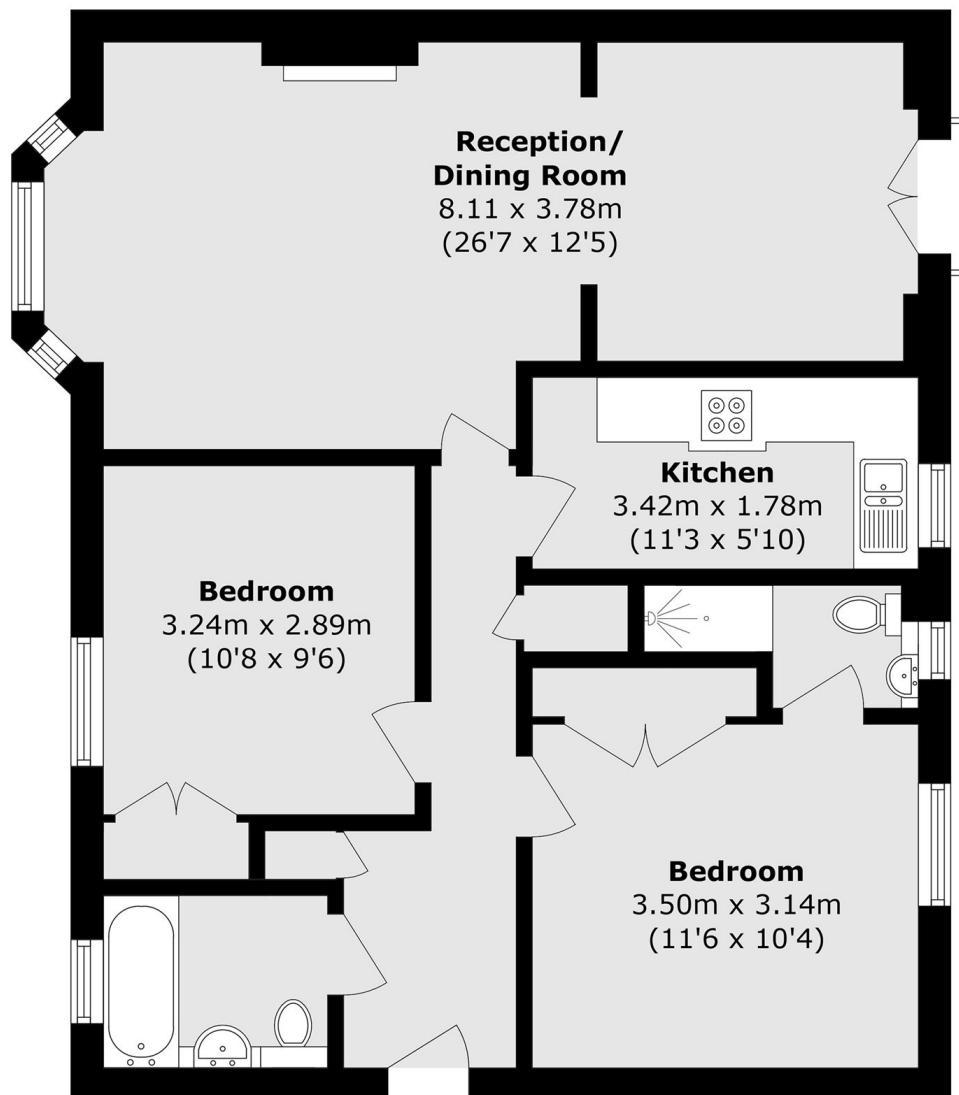
Located on a quiet residential cul-de-sac is this bright and spacious two bedroom flat. The property is well presented throughout, offering a generous reception room, two double bedrooms with fitted wardrobes, one with an en suite, main bathroom and spacious kitchen. Further benefits include off-street allocated parking. The property is located on the third floor, offering a fantastic view over the playing fields.

The property is located within easy reach of the tranquil open spaces of Richmond Park, while Kingston town centre is easily accessible for a wide variety of shops, bars and entertainment. Local transport links include Kingston Station and a great bus network.

### Features

- Two Double Bedrooms
- Two Bathrooms
- Third Floor
- Allocated Parking
- Excellent Location
- Loft Storage

# Wittering Close, Kingston Upon Thames, KT2



Total area (approx.): 73.2 sq. m (787.9 sq. ft)