



St. Mark's Hill, KT6

£285,000

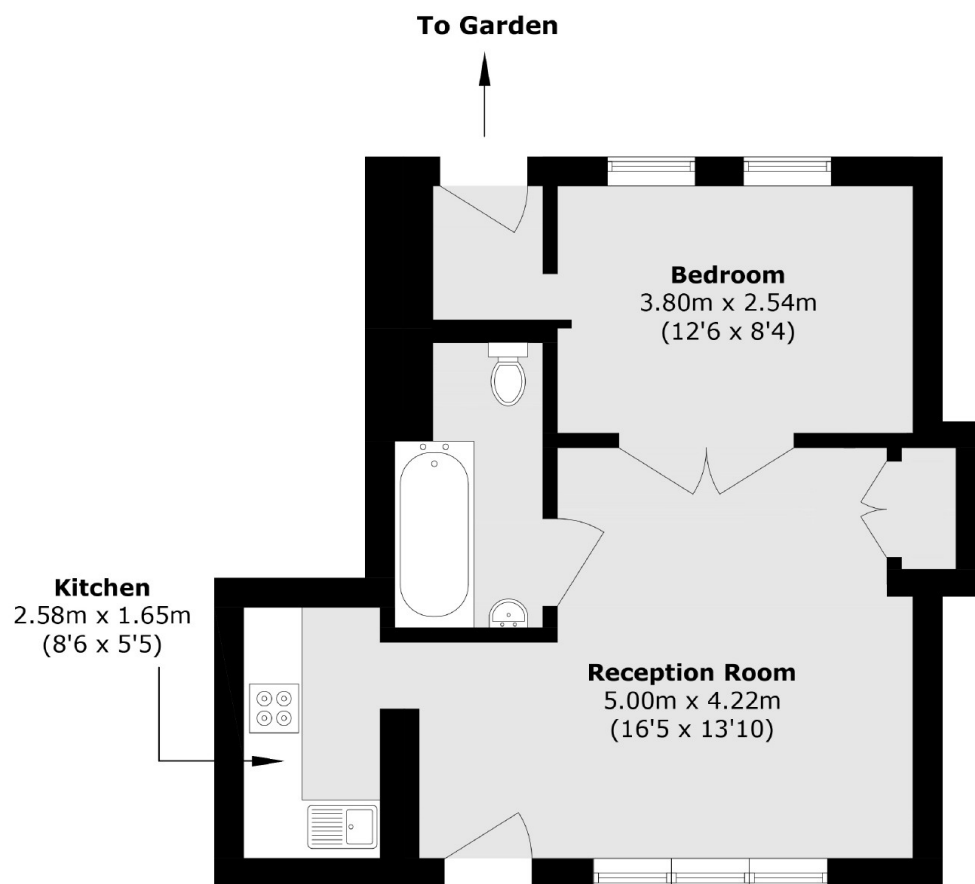
A one double bedroom ground floor apartment in a super central location. There is a bright and spacious reception room, separate kitchen, bathroom suite, double bedroom and direct access on to a large private garden.

St Marks Hill is nestled in the heart of Surbiton with everything you need on the doorstep, including the mainline train and a variety of shops, bars and restaurants.

Features

- One Double Bedroom
- Private Garden
- Share Of Freehold
- No Onward Chain
- Central Location
- Ground Floor

St. Mark's Hill, Surbiton, KT6



Total area (approx.): 40.0 sq. m (430.5 sq. ft)