



## St. James Road, KT6

### £599,950

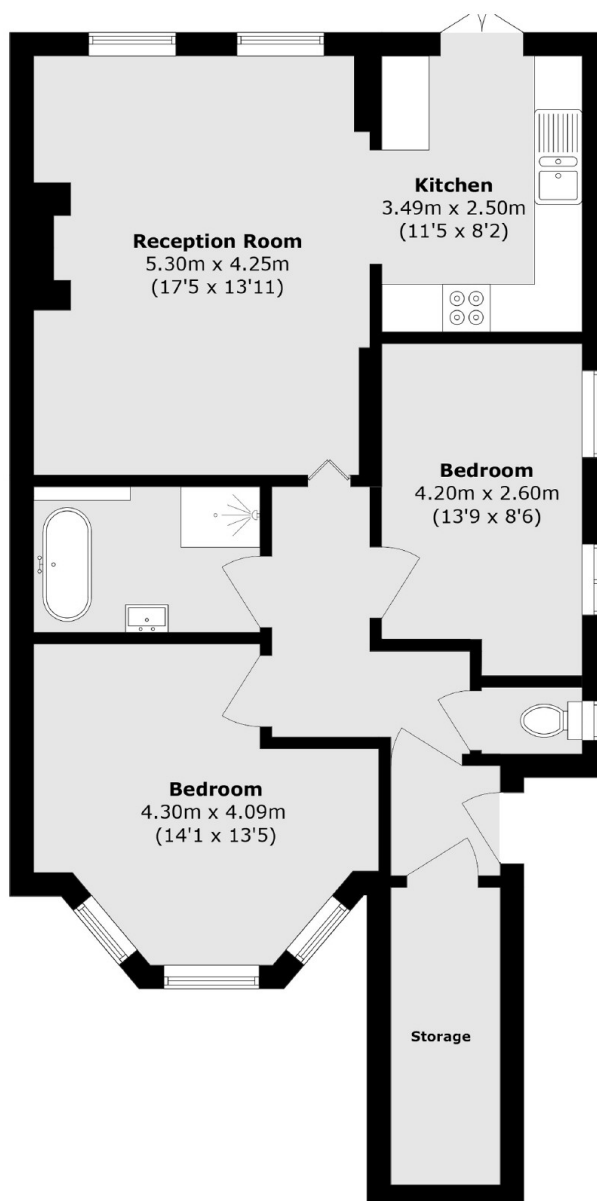
A beautifully refurbished two-bedroom period conversion in central Surbiton. This stylish flat features its own front door, direct access to a large sunny private garden, and a bay-fronted reception room. Inside are two generous double bedrooms, a modern kitchen, a sleek bathroom, and a separate WC. Additional benefits include front storage, a long lease, no onward chain and additional personal storage on the ground level.

St. James' Road is peacefully located in the heart of Surbiton, with everything you need all less than half a mile away including the River Thames, the mainline train station with fast trains to London Waterloo in 17 mins and Surbiton's high street and farmers market.

### Features

- Victorian Conversion
- Central Location
- Maisonette
- Two Double Bedrooms
- Private Garden
- No Onward Chain

# St. James Road, Surbiton, KT6



Total area (approx.): 78.5 sq. m (845.0 sq. ft)

## Dexters

Surbiton  
4 Claremont Road  
Surbiton  
KT6 4QU  
Sales  
020 8390 3939

Energy Rating: D. We aim to make our particulars both accurate and reliable. However they are not guaranteed; nor do they form part of an offer or contract. If you require clarification on any points then please contact us, especially if you're traveling some distance to view. Please note that appliances and heating systems have not been tested and therefore no warranties can be given as to their good working order.

 **RICS** | Regulated  
Estate Agent  
and Letting Agent

[dexters.co.uk](https://www.dexters.co.uk)