



## Mayberry Place, KT5

£749,950

A beautifully presented end-of-terrace three bedroom, two bathroom Period home, ideally positioned to enjoy both the charm of Surbiton and swift access to Central London.

Located just half a mile from Surbiton Station offering up to 10 trains per hour and direct services to London Waterloo in as little as 16 minutes, this property combines outstanding connectivity with the tranquillity of a leafy, residential setting, with local parks and amenities on the doorstep.

### Features

- Victorian Home
- Open Plan Kitchen/Dining
- Three Bedrooms
- Two Bathrooms
- Beautifully Presented
- Great Location



## Mayberry Place, KT5

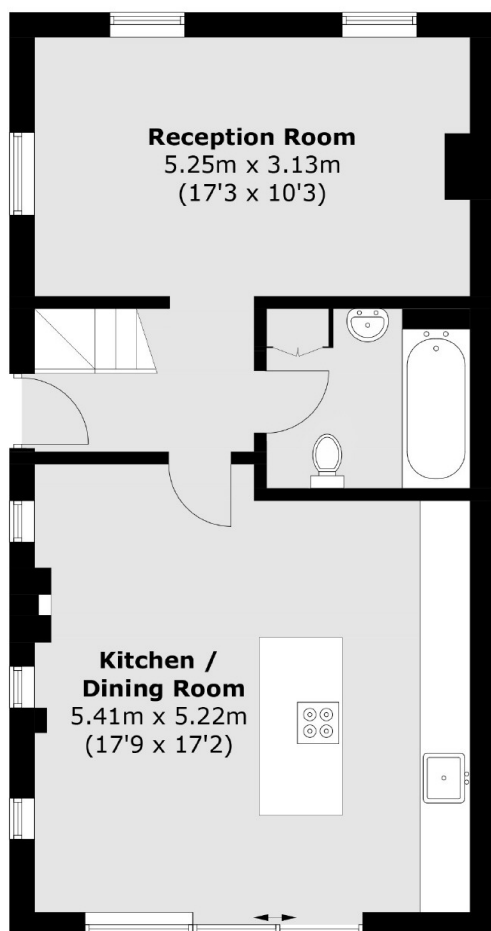
The accommodation is thoughtfully arranged and comprises a spacious double reception room, a modern extended kitchen/dining area with high-quality fittings and large patio doors opening onto a private garden, three bedrooms (two doubles and one single), and two contemporary bathrooms, both of which have been refurbished within the last five years.

The generous kitchen/dining space serves as the focal point of the home, providing an ideal environment for entertaining and everyday family living. This is an exceptional opportunity to acquire a well-maintained family home in one of Surbiton's most desirable residential areas.

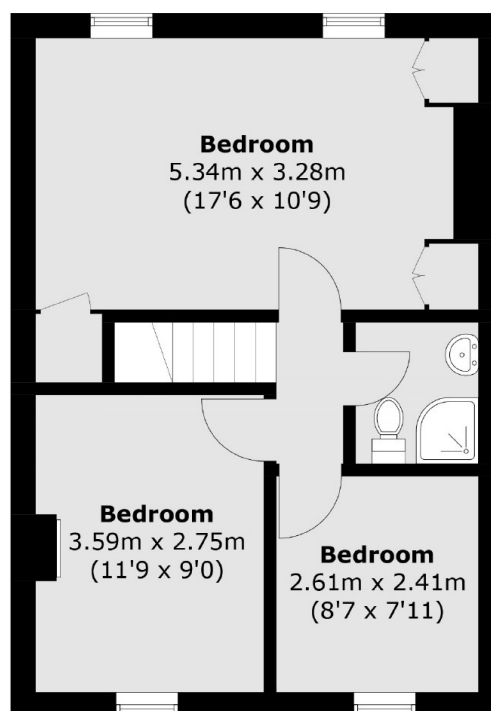




# Mayberry Place, Surbiton, KT5



**Ground Floor**



**First Floor**

Total area (approx.): 98.2 sq. m (1,056.9 sq. ft)