



Lovelace Road, KT6

£449,950

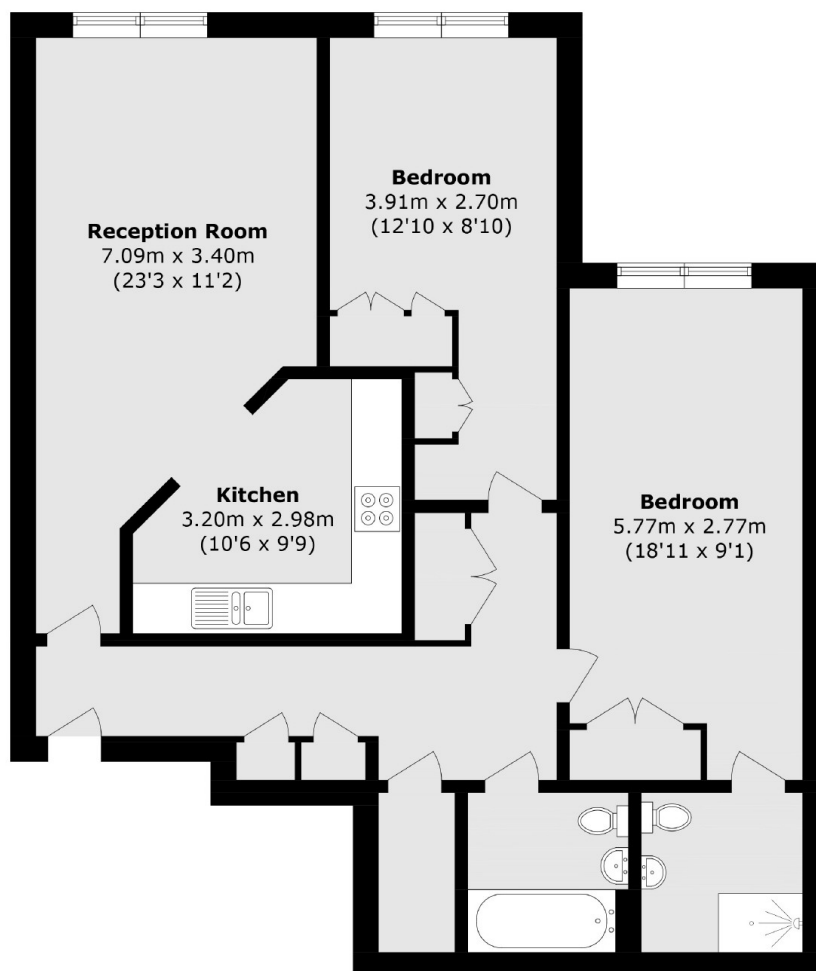
A well presented, larger than average, two double bedroom, two bathroom purpose built apartment. This apartment is situated on a quiet tree lined road, has gated off street parking and benefits from no onward chain.

Lovelace Road is a peaceful tree lined street in the heart of Surbiton, approximately half a mile away from Surbiton mainline train station and its fast route to Waterloo and a vast selection of shops, bars and restaurants.

Features

- Two Double Bedrooms
- Two Bathrooms
- Gated Allocated Parking
- Fantastic Condition
- Central Location
- No Onward Chain

Lovelace Road, Surbiton, KT6



Total area (approx.): 80.8 sq. m (869.7 sq. ft)