



## Ewell Road, KT6

£325,000

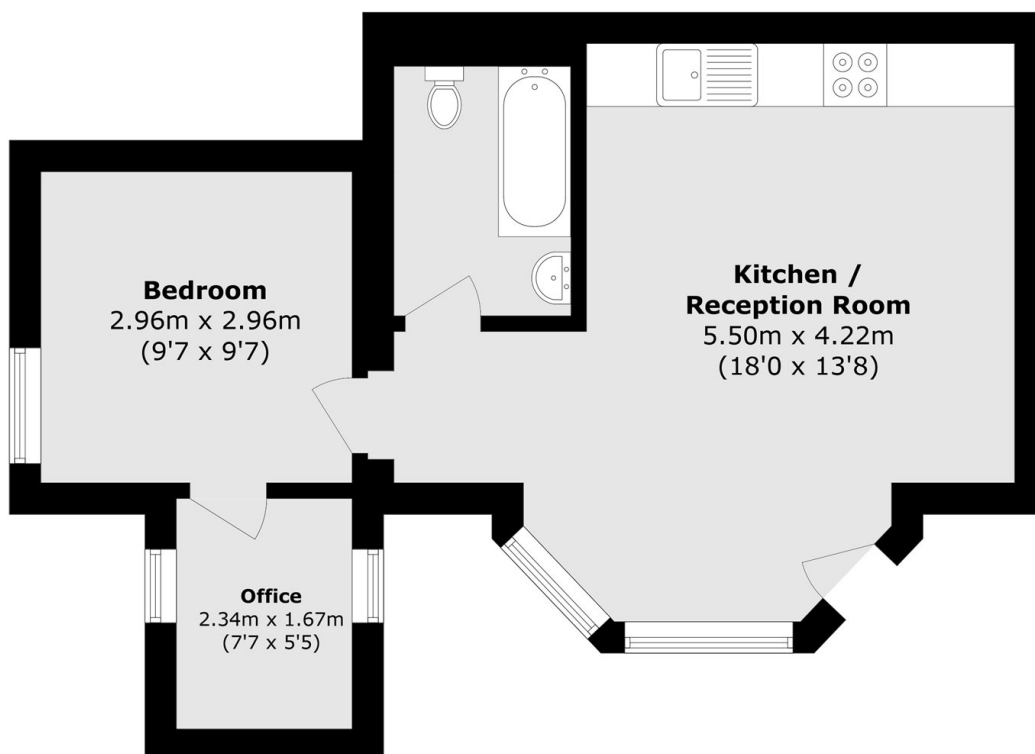
This one double bedroom property is complete with high ceilings and large bay windows in the spacious kitchen/dining/living room. There is a private garden, communal gardens and off-street parking on a first come first served basis.

Ewell Road has a variety of local shops, bars and restaurants, and is just over half a mile away from Surbiton town centre, with the mainline train station and popular high street.

### Features

- One Double Bedroom
- Private Garden
- Communal Gardens
- No Onward Chain
- Office Space
- Period Property

# Ewell Road, Surbiton, KT6



Total area (approx.): 42.3 sq. m (455.3 sq. ft)