



Adelaide Road, KT6

£650,000

Set within an elegant Victorian villa, this immaculate two-bedroom garden apartment showcases exquisite period charm blended seamlessly with contemporary luxury. Occupying the raised ground floor, the property is distinguished by its impressive three-metre high ceilings, refined architectural detailing and a beautifully designed, fully integrated kitchen that enhances both style and functionality.

Adelaide Road is in the heart of Surbiton with everything you need on your doorstep, including the mainline train station with fast access to London Waterloo in 16 minutes and a vast selection of local shops, gastro pubs and excellent restaurants.

Features

- Victorian Villa
- Private Garden
- Raised Ground Floor
- Beautiful Original Features
- Immaculately Presented
- Central Location

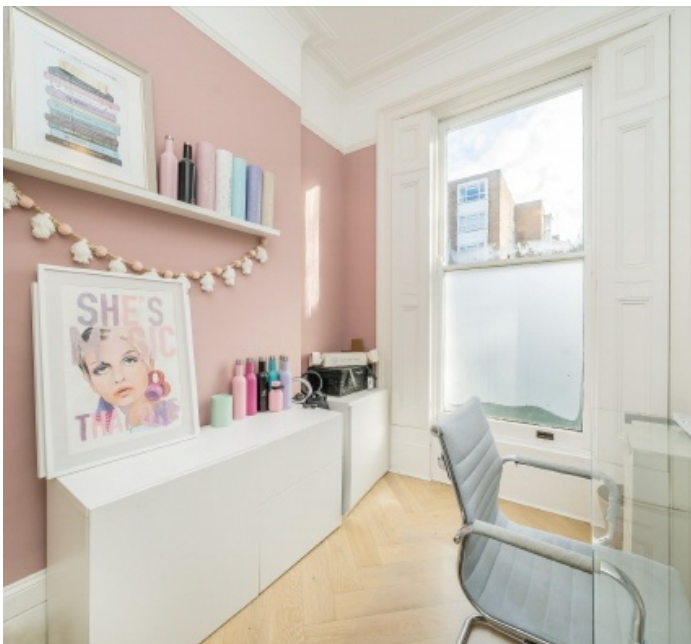


Adelaide Road, KT6

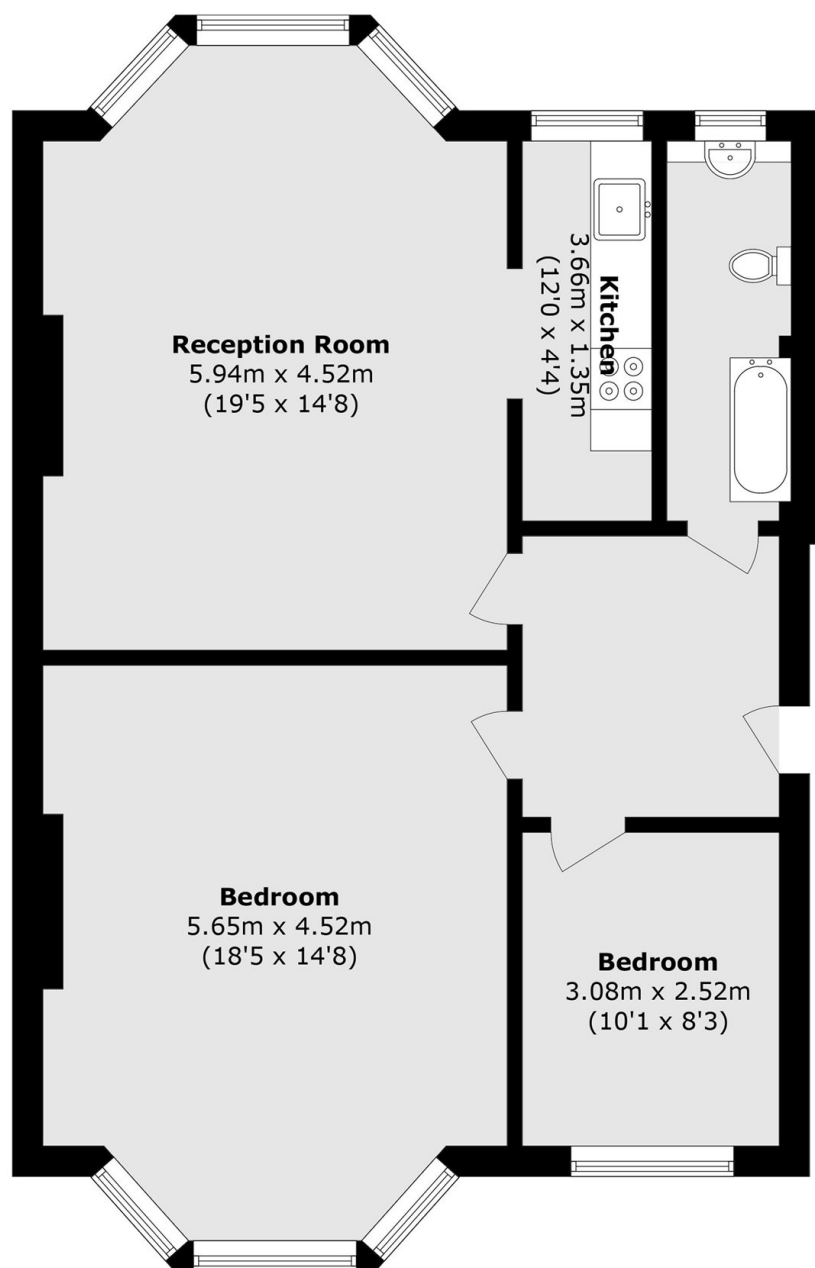
The interiors are flawlessly presented, offering generous proportions and an elevated sense of space throughout.

Perfectly positioned for an enviable lifestyle, you'll find a vibrant farmers' market, acclaimed restaurants, boutique bars and the fast train into London quite literally on your doorstep.

A rare opportunity to secure a home of exceptional character and convenience in one of the area's most desirable Victorian conversions.



Adelaide Road, Surbiton, KT6



Total area (approx.): 76.5 sq. m (823.4 sq. ft)