



Lovelace Road, KT6

£349,950

A top floor one bedroom apartment with a spacious reception room, separate kitchen, bathroom and on a desirable road in central Surbiton. The property also benefits from a share of the freehold, allocated parking, private balcony, plenty of storage throughout and communal gardens.

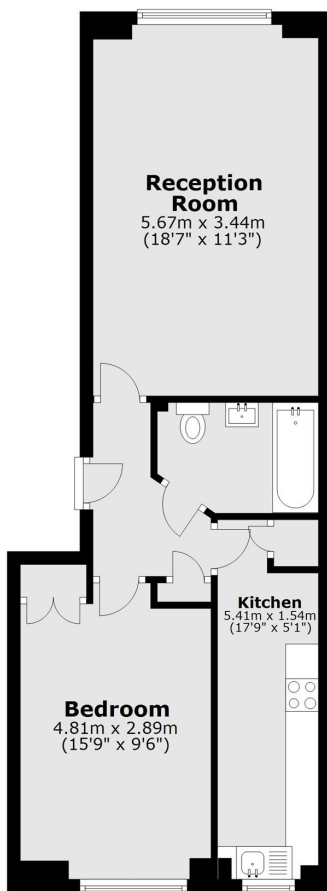
Lovelace Road is a sought after tree lined road and has everything you need on the doorstep, including Surbiton High Street and train station, the river and the desirable Maple Road.

Features

- Top Floor Apartment
- One Double Bedroom
- Allocated Parking
- Desirable Road
- Share of Freehold
- Large Reception Room

Lovelace Road, Surbiton, KT6

Second Floor



Total area: approx. 50.2 sq. metres (540.6 sq. feet)