



Grand Avenue, KT5

£925,000

Dexters



Grand Avenue, KT5

This bay-fronted four-bedroom semi-detached home has been thoughtfully extended on the ground floor and enjoys an unrivalled outlook across the tranquil Berrylands Nature Reserve. Offering superb, well proportioned living space throughout, it is an ideal choice for families seeking both comfort and convenience.

The ground floor has been extended to provide a large kitchen/dining/family space with doors out to the large garden. There is also a separate reception room and a downstairs w/c

On the first floor there are two double bedrooms, a good size single bedroom and a family bathroom. The loft has been thoughtfully converted to provide a master bedroom with ensuite bathroom and Juliet balcony

The property further benefits from a large garden and views of the tranquil Berrylands Nature Reserve to the rear and off street parking for two cars to the front. There are also some useful storage sheds.

Berrylands is a vibrant and community focused area and is half a mile from Berrylands train station. Grand Avenue is also a stones throw from the Berrylands Nature Reserve, local parks, shops and outstanding schools. Surbiton train station with its fast links into London is 1.5 miles away.

Features

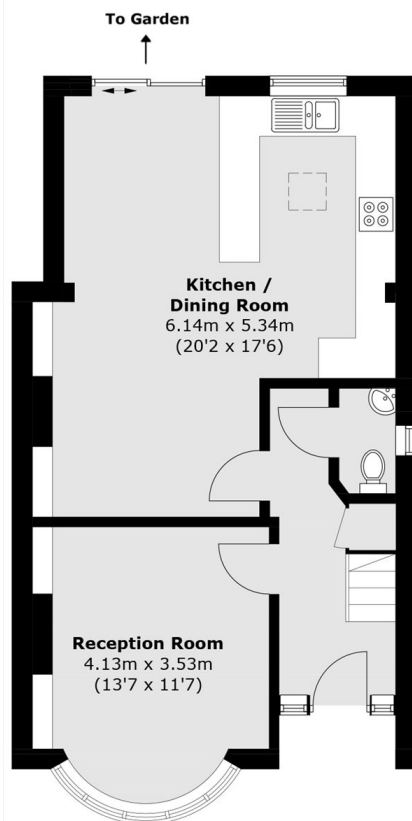
- Four Bedrooms
- Semi Detached
- Rear Extended
- Large Rear Garden
- Off Street Parking
- Views Of The Nature Reserve



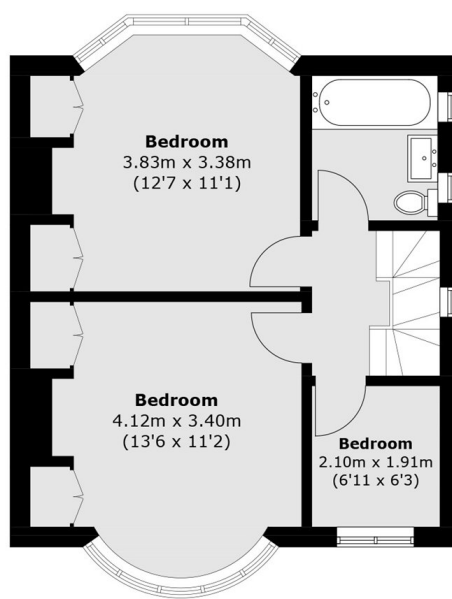




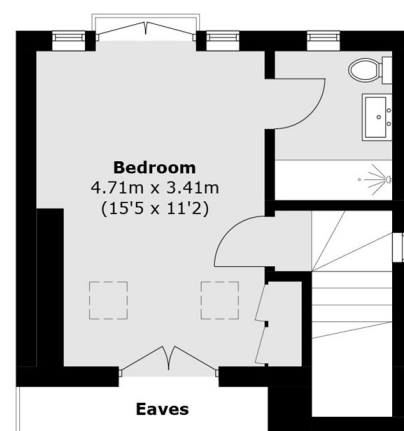
Grand Avenue, Surbiton, KT5



Ground Floor



First Floor



Second Floor

Total area (approx.): 121.8 sq. m (1,311.0 sq. ft)
(Excluding Eaves)