



## St. Mark's Hill, KT6

### £325,000

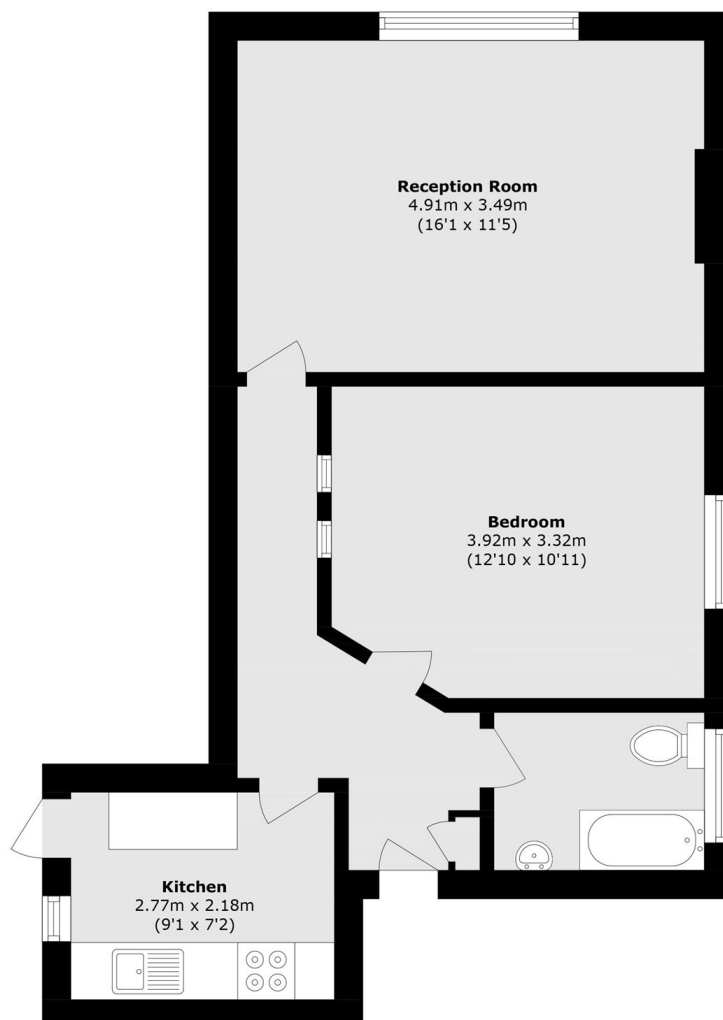
A one double bedroom second floor apartment in a super central location. There is a bright and spacious living/dining room, separate kitchen, bathroom suite and a well proportioned double bedroom.

St Marks Hill is nestled in the heart of Surbiton with everything you need on the doorstep, including a variety of shops, bars and restaurants as well as the sought after mainline train station.

### Features

- One Double Bedroom
- Share Of Freehold
- Central Location
- Second Floor
- Great Condition
- Open Plan Living/Dining Room

# St. Mark's Hill, Surbiton, KT6



Total area (approx.): 48.0 sq. m (516.6 sq. ft)