



## Brighton Road, KT6

### £350,000

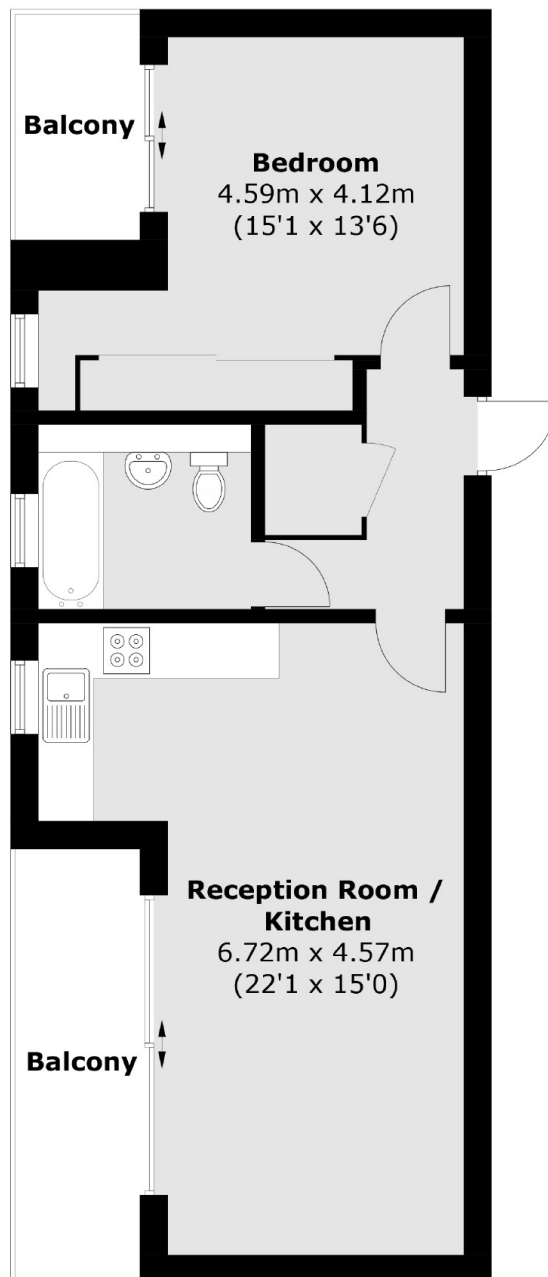
An immaculate, modern apartment situated in a central location. Accommodation includes an open plan kitchen/reception room with access to a balcony, one double bedroom also with a private balcony, and a modern bathroom.

Brighton Road is in the heart of Surbiton, with the buzz of the desirable Maple Road and the popular high street both around the corner. Surbiton's mainline train station is less than half a mile away.

### Features

- Immaculately Presented
- Open Plan Living
- One Double Bedroom
- Private Balconies
- Close to River
- Central Location

# Brighton Road, Surbiton, KT6



Total area (approx.): 51.1 sq. m (550.0 sq. ft)  
Balcony area (approx.): 9.6 sq. m (103.3 sq. ft)

## Dexters

Surbiton  
4 Claremont Road  
Surbiton  
KT6 4QU  
Sales  
020 8390 3939

Energy Rating: B. We aim to make our particulars both accurate and reliable. However they are not guaranteed; nor do they form part of an offer or contract. If you require clarification on any points then please contact us, especially if you're traveling some distance to view. Please note that appliances and heating systems have not been tested and therefore no warranties can be given as to their good working order.

 **RICS** | Regulated  
Estate Agent  
and Letting Agent

[dexters.co.uk](https://www.dexters.co.uk)