



Thornhill Road, KT6

£799,950

A stunning period home, combining the best of period character with modern luxury living. This property offers a reception room, an open plan kitchen diner, a utility room, three double bedrooms, two bathrooms and a WC.

Thornhill Road is a peaceful residential road, approximately a mile away from both Surbiton and Tolworth town centres with their mainline train stations and popular high streets, and close to great schools.

Features

- Three Double Bedrooms
- Two Bathrooms
- Downstairs W/C
- Period Property
- Open Plan Living
- Private Garden



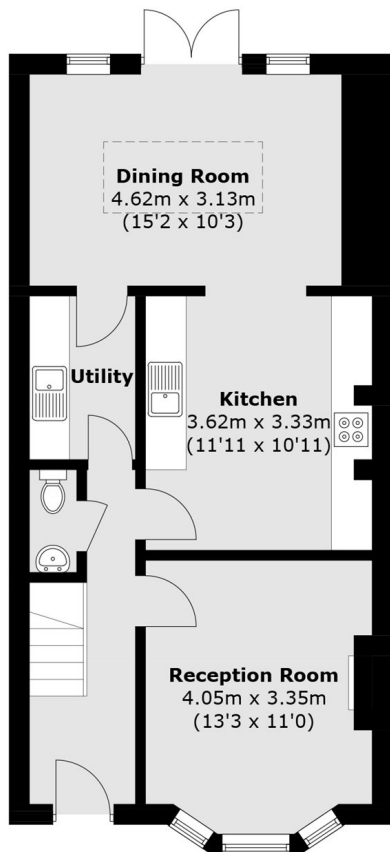
Thornhill Road, KT6

On the ground floor the house offers an original bay fronted reception room with original feature fireplace, a modern open plan kitchen diner with integrated appliances and a utility room.

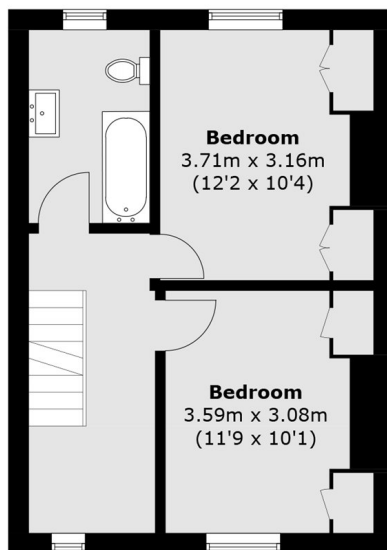
On the first floor there are two spacious bedrooms and an immaculate family bathroom. The top floor is the bright principle bedroom with an en-suite bathroom.



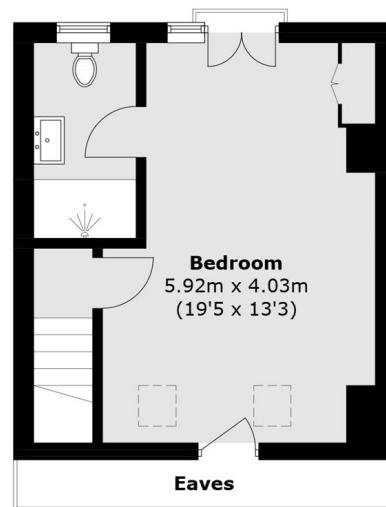
Thornhill Road, Surbiton, KT6



Ground Floor



First Floor



Second Floor

Total area (approx.): 122.5 sq. m (1,318.5 sq. ft)
(Excluding Eaves)