



## Hobill Walk, KT5

### £500,000

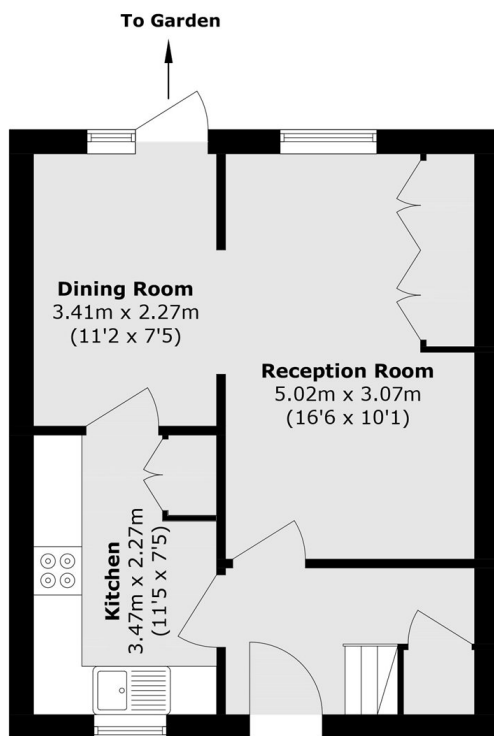
A beautifully proportioned two-bedroom end-of-terrace home, tucked away on a peaceful residential road in the heart of Surbiton. This inviting property offers generous and well-balanced accommodation, including a bright and airy living room, a separate dining room perfect for entertaining, a sleek and practical modern kitchen, and a private, low-maintenance garden ideal for relaxing or hosting on warm evenings.

Perfectly positioned for convenience and connectivity, Hobill Walk enjoys easy access to Surbiton High Street, home to an excellent selection of independent shops, cafés, bars and restaurants, as well as an 8 minute walk to the mainline station with fast and frequent services into Waterloo in as little as 16 minutes. The vibrant Ewell Road is also just moments away, offering even more popular eateries and local amenities.

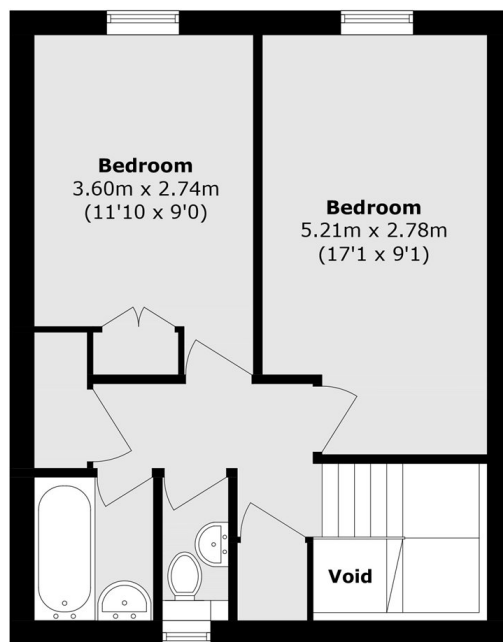
### Features

- End of Terrace
- Well Presented
- Two Reception Rooms
- Two Double Bedrooms
- Private Garden
- Great Location

# Hobill Walk, Surbiton, KT5



**Ground Floor**



**First Floor**

Total area (approx.): 78.1 sq. m (840.6 sq. ft)  
(Excluding Void)