



Meadway, KT5
£520,000

Dexters



Meadway, KT5

This well presented mid terrace family home includes an open plan kitchen/dining room, three bright and spacious bedrooms and a large rear garden. This property also benefits from a lodge in the garden and a driveway for multiple cars.

On the ground floor there is a welcoming entrance, a spacious and bright front reception room and a great sized open plan kitchen/dining area with a fully integrated kitchen including dishwasher, washing machine, fridge/freezer and tumble dryer.

Upstairs there are three well proportioned bedrooms with a family bathroom suite. To the front of the property there is a driveway with electric car charging point. To the rear of the property there is a large rear garden, with a paved section, turfed section, rear access and a lodge which has WIFI, heating/aircon and outside lighting.

Do not hesitate to book in to view.

Meadway has easy access to the A3 and is conveniently less than half a mile away from Tolworth train station and a vast selection of local shops, bars and restaurants.

Features

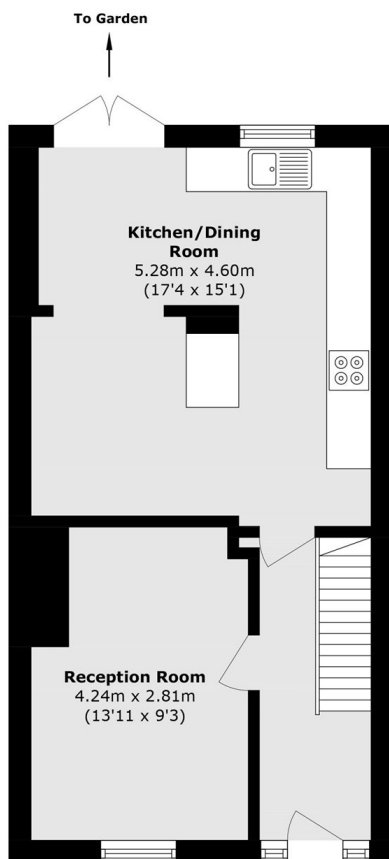
- Terraced Family Home
- Three Bedrooms
- Off-Street Parking
- Open Plan Kitchen/Dining Area
- Private Garden With Lodge
- EV Car Charging Point



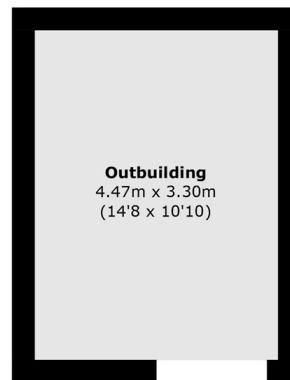




Meadway, Surbiton, KT5

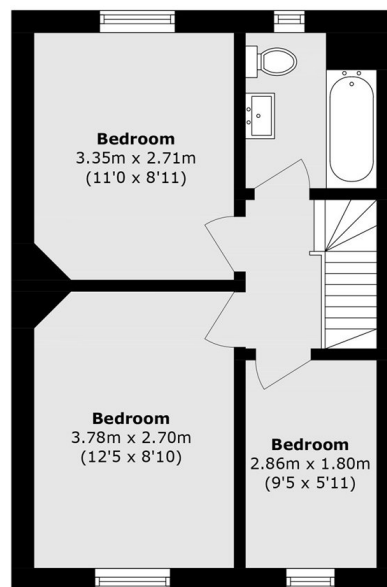


Ground Floor



Outbuilding
4.47m x 3.30m
(14'8 x 10'10)

(Not Shown In Actual
Location/Orientation)



First Floor

Total area (approx.): 76.7 sq. m (825.5 sq. ft)
Outbuilding (approx.): 14.7 sq. m (158.2 sq. ft)