



Grove Road, KT6

£525,000

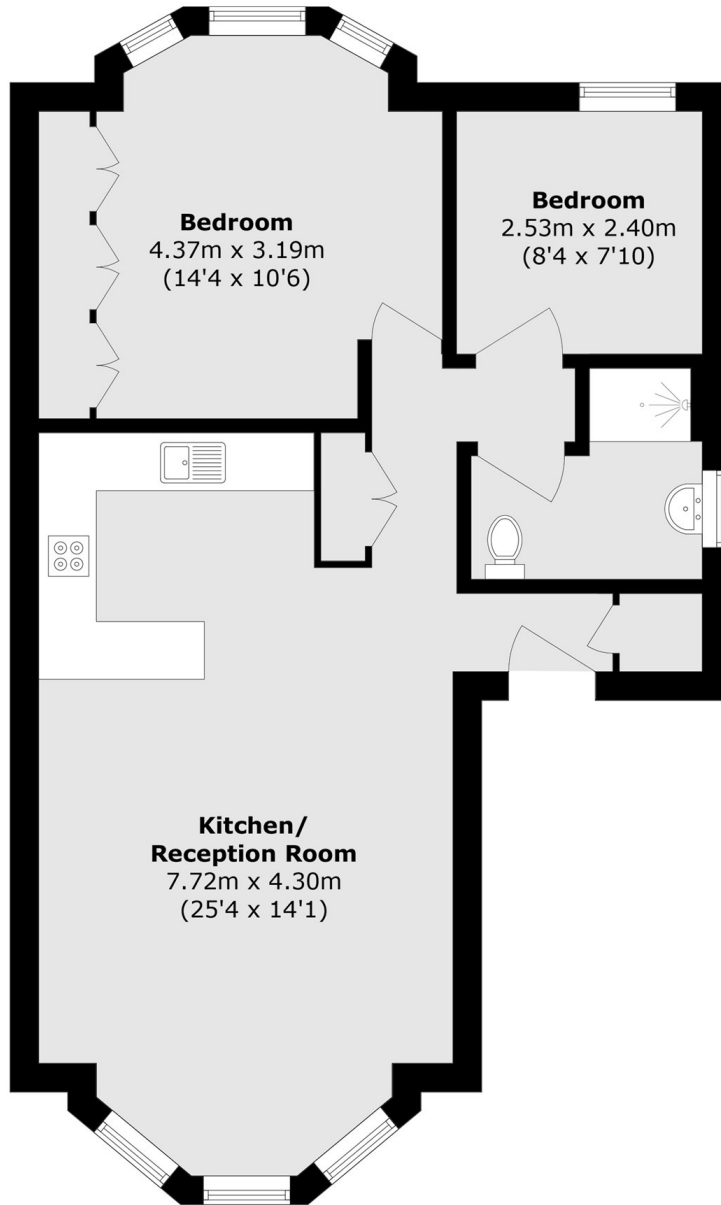
Launch Day Saturday 24th January. A raised ground floor Victorian apartment, with stunning high ceilings throughout and an open plan kitchen/dining/living room. Accommodation includes two bedrooms, a bathroom and allocated parking.

Grove Road is one of Surbiton's premier roads, off of Portsmouth Road which runs along the idyllic River Thames. It is also off the desirable Maple Road with its variety of shops, bars and restaurants.

Features

- Victorian Apartment
- Grand Sash Windows
- Spectacular High Ceilings
- Two Bedrooms
- Allocated Parking
- Open Plan Layout

Grove Road, Surbiton, KT6



Total area (approx.): 62.2 sq. m (669.5 sq. ft)