



Tolworth Park Road, KT6

£799,950

Dexters



Tolworth Park Road, KT6

This modern three bedroom smart home has been fully refurbished to high standard throughout. It is beautifully presented, immaculate throughout and offers modern luxury living. There is an extended open plan reception/dining room, high spec kitchen with top of the range appliances, a large downstairs bathroom, three bedrooms and an en-suite shower room.

This property is ready to move into straight away, the ground floor offers a bright modern through reception with solid oak wooden flooring and a dining area. A large stylish newly fitted bathroom and a fantastic extended kitchen with vaulted ceiling and bi-fold patio doors out to the rear garden.

On the first floor there are three perfectly presented bedrooms and an immaculate en-suite shower room. To the rear of the property there is a secluded landscaped garden with patio and lawn and to the front there is off street parking.

Tolworth Park Road is a peaceful road just over a mile away to Surbiton town centre with its fast link train line to London. Tolworth's mainline train station is just half a mile away and has easy access to the A3.

Features

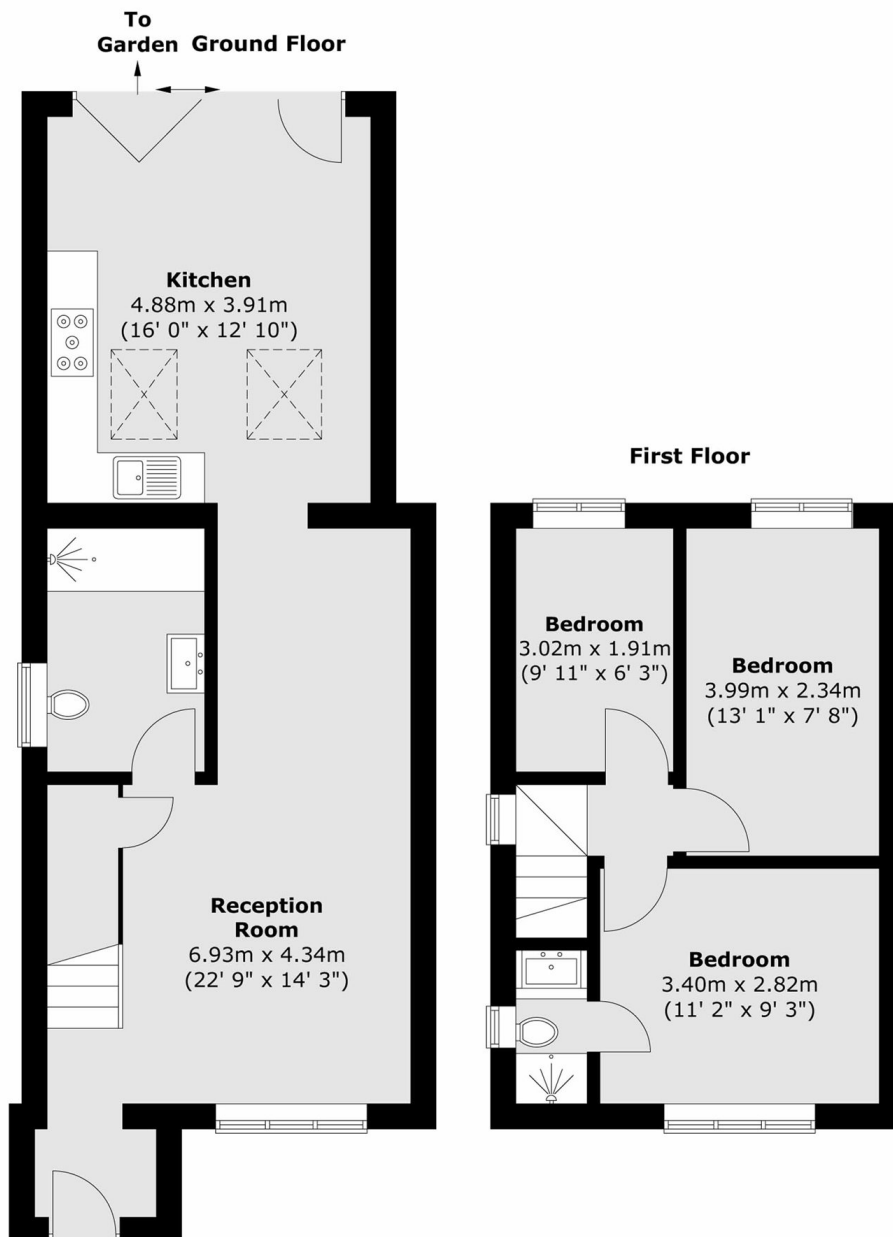
- Semi Detached
- Newly Refurbished
- Three Bedrooms
- Rear Extended
- Off Street Parking
- Secluded Garden







Tolworth Park Road, Surbiton, KT6



Total area (approx.) : 83.4 sq. m (898 sq. ft)

Dexters

Surbiton
4 Claremont Road
Surbiton
KT6 4QU
Sales
020 8390 3939

Energy Rating: C. We aim to make our particulars both accurate and reliable. However they are not guaranteed; nor do they form part of an offer or contract. If you require clarification on any points then please contact us, especially if you're traveling some distance to view. Please note that appliances and heating systems have not been tested and therefore no warranties can be given as to their good working order.

 **RICS** | Regulated
Estate Agent
and Letting Agent

[dexters.co.uk](https://www.dexters.co.uk)