



## Bond Road, KT6

### £335,000

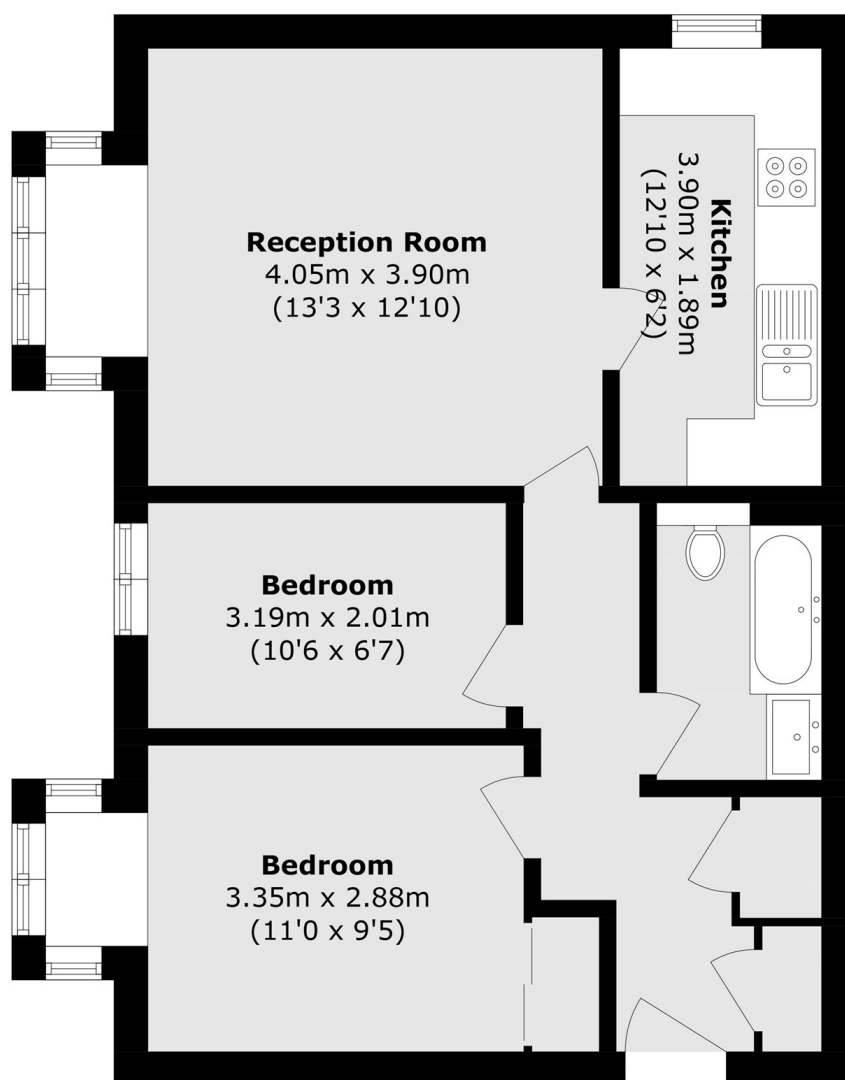
A well presented and spacious first floor apartment ideally situated on a quiet residential road. The property features two generous double bedrooms, a well appointed bathroom and a modern integrated kitchen. Further benefits include allocated off street parking, no onward chain and a new lease upon completion.

Bond Road is conveniently located approximately a mile away from both Tolworth and Surbiton train stations and their popular and busy High Streets.

### Features

- Two Double Bedrooms
- Modern Finish Throughout
- No Onward Chain
- New Lease Upon Completion
- Allocated Off Street Parking
- Integrated Kitchen Appliances

# Bond Road, Surbiton, KT6



Total area (approx.): 56.2 sq. m (604.9 sq. ft)