



Grove Road, KT6

£2,700 Per calendar month

This well presented three bedroom Victorian conversion apartment has it's own private garden and a large open plan living/kitchen area.

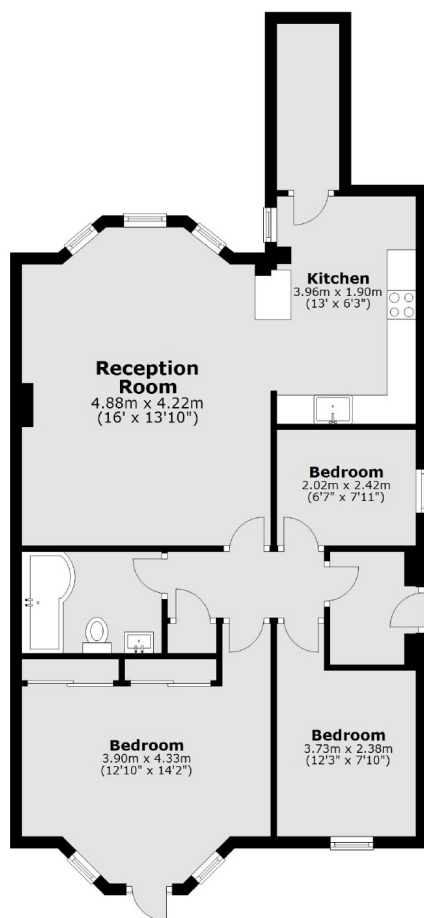
Grove Road is one of Surbitons premier roads, off of Portsmouth Road which runs along the idyllic River Thames. It is also off the desirable Maple Road with its modern variety of shops, bars and restaurants.

Features

- Victorian Conversion
- Three Bedrooms
- Private Garden
- Open Plan
- River Road
- Central Location

Grove Road, Surbiton, KT6

Ground Floor



Total area: approx. 77.4 sq. metres (832.8 sq. feet)

Dexters

Surbiton
2 Claremont Road
Surbiton
KT6 4QU
Lettings
020 8390 6544

Energy Rating: D. We aim to make our particulars both accurate and reliable. However they are not guaranteed; nor do they form part of an offer or contract. If you require clarification on any points then please contact us, especially if you're traveling some distance to view. Please note that appliances and heating systems have not been tested and therefore no warranties can be given as to their good working order.

 **RICS** | Regulated
Estate Agent
and Letting Agent

[dexters.co.uk](https://www.dexters.co.uk)