



Seething Wells Lane, KT6

£699,950

Tucked away within an exclusive mews setting, this exceptional three-storey home offers refined living in the heart of sought-after Surbiton. Designed with both style and practicality in mind, the property benefits from secure private underground parking and an enviable central location just moments from the area's vibrant mix of boutique bars, acclaimed restaurants and the popular farmers' market.

Positioned within easy reach of Surbiton station, with its fast and frequent service to London Waterloo, this is a rare opportunity to acquire a sophisticated, low-maintenance home in one of south west London's most desirable locations perfectly balancing lifestyle, luxury

Features

- Mews Home
- Two Bedrooms
- Two Bathroom
- Large Kitchen
- Ideal Location
- Underground Parking



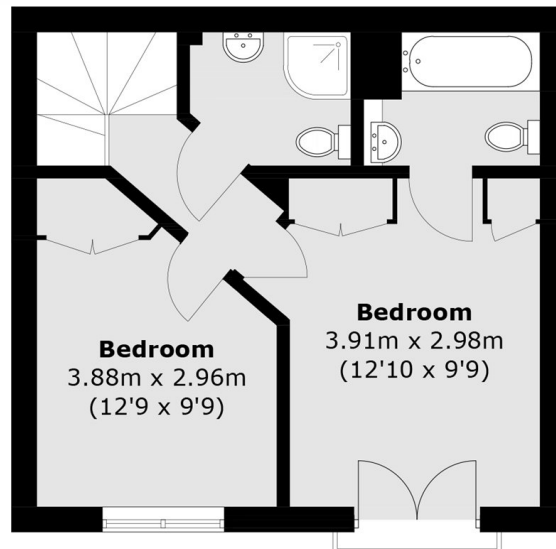
Seething Wells Lane, KT6

The accommodation is beautifully arranged across three floors, creating a natural flow between living and private spaces. At its heart lies a stunning open-plan kitchen and entertaining area thoughtfully designed with generous proportions and a seamless finish, perfect for hosting in style or enjoying relaxed everyday living. A separate utility space ensures practicality without compromising on elegance.

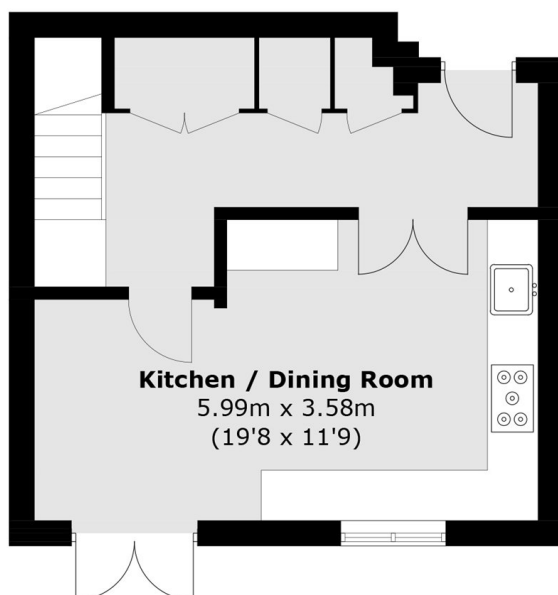
Upstairs, two beautifully appointed double bedrooms provide luxurious retreats. The principal suite is complemented by a sleek en-suite bathroom and charming Juliet balcony, allowing light to flood the space and offering an elevated outlook. A second contemporary bathroom serves the additional bedroom and guests.



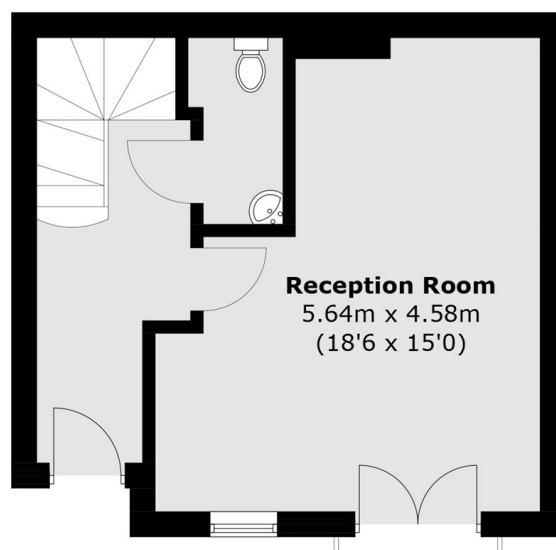
Seething Wells Lane, Surbiton, KT6



First Floor



Basement



Ground Floor

Total area (approx.): 101.2 sq. m (1,089.2 sq. ft)
(Including Basement)