



## Bedford Road, SW4

### £350,000

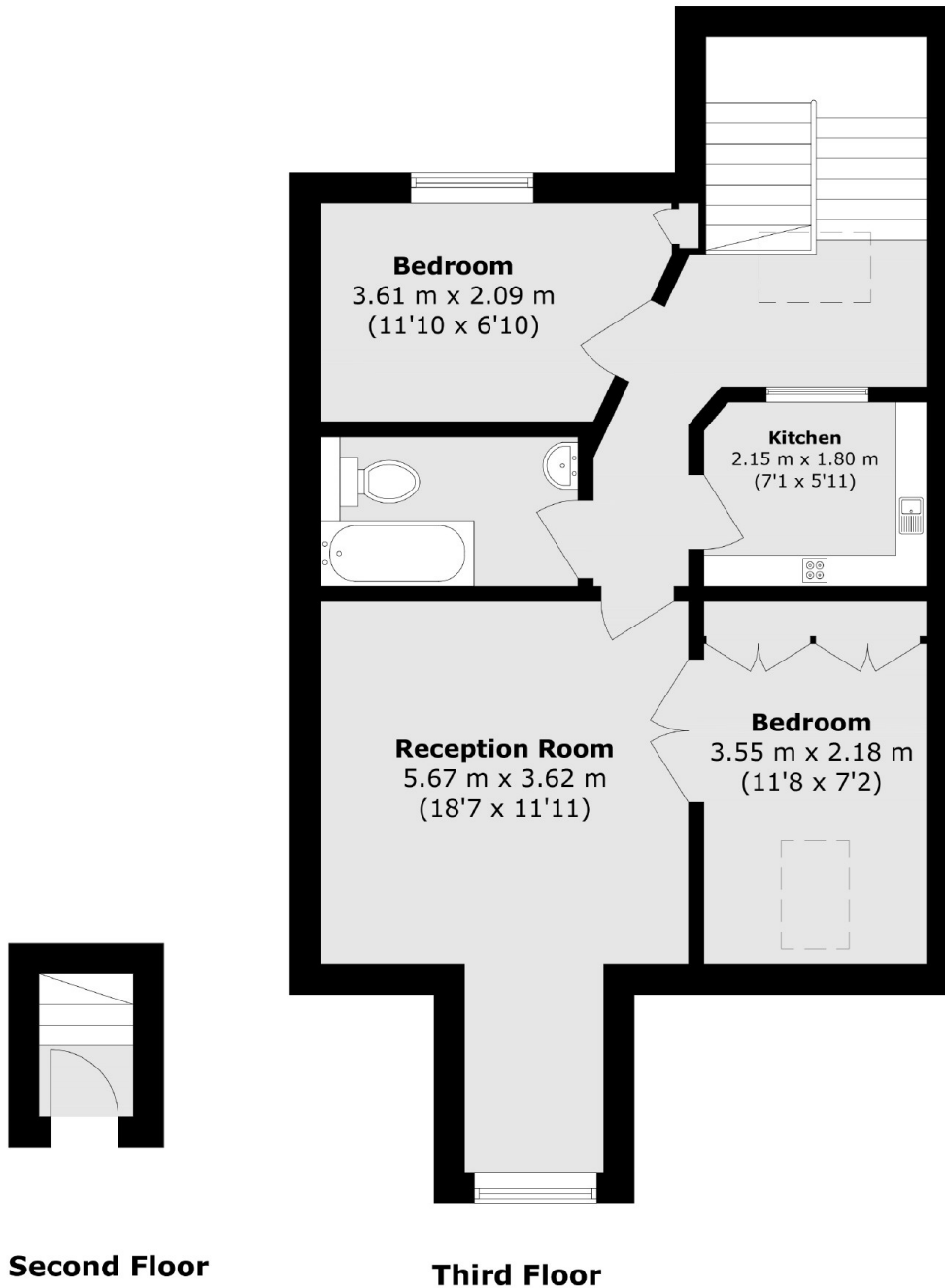
A charming two-bedroom top-floor period conversion flat, ideally located just moments from the vibrant Clapham High Street. The property offers well-balanced accommodation, including a bright reception room, separate fitted kitchen, two bedrooms, and a modern bathroom perfect for first-time buyers or investors seeking a prime location.

Bedford Road is conveniently situated moments away from the shops, bars and restaurants on Clapham High Street and the open spaces of Clapham Common with transport nearby at Clapham North (Northern Line & Overground).

### Features

- Top Floor Conversion
- Spacious Reception
- Separate Kitchen
- Two Double Bedrooms
- Near Transport
- No Chain

# Bedford Road, London, SW4



Total area (approx.): 51.7 sq. m (556.4 sq. ft)

## Dexters

Clapham High Street  
55 Clapham High Street  
London  
SW4 7TG  
Sales  
020 7483 6363

Energy Rating: D. We aim to make our particulars both accurate and reliable. However they are not guaranteed; nor do they form part of an offer or contract. If you require clarification on any points then please contact us, especially if you're traveling some distance to view. Please note that appliances and heating systems have not been tested and therefore no warranties can be given as to their good working order.

 **RICS** | Regulated  
Estate Agent  
and Letting Agent

[dexters.co.uk](https://www.dexters.co.uk)