



## Sandmere Road, SW4

### £525,000

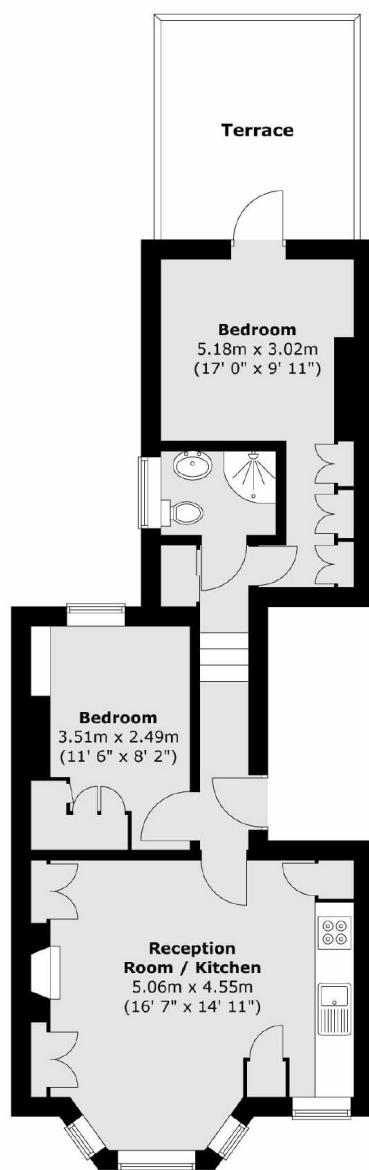
A charming first floor period conversion featuring two spacious double bedrooms, a modern bathroom, and a large roof terrace. Perfectly blending period character with contemporary living, this home offers plenty of light and outdoor space in a sought after location. The property also benefits from being sold chain free and with a share of the freehold.

Sandmere Road is located a very short walk from the many shops, restaurants and bars of Clapham High Street & Clapham Old Town, along with Clapham North Underground (Northern Line), Overground & Brixton Underground (Victoria Line) stations.

### Features

- Two Double Bedrooms
- Split Level
- Roof Terrace
- Period Conversion
- Chain Free
- Share of Freehold

# Sandmere Road, London, SW4



Total area (approx.) : 49.6 sq. m (534 sq. ft)  
Total terrace area (approx.) : 10.9 sq. m (117 sq. ft)