



## Branksome Road, SW2

£2,600 Per calendar month

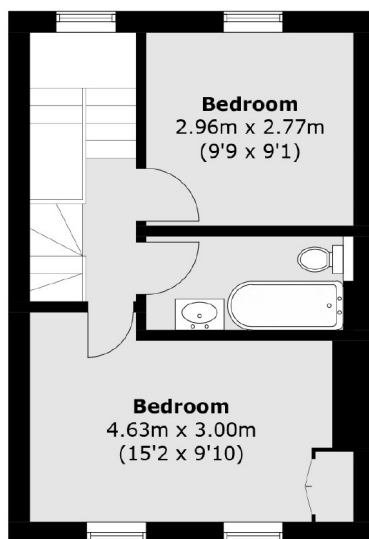
Set on the top floor, this attractive two bedroom flat provides plenty of character throughout. Offering a semi open plan reception room with an exposed brick wall/feature fireplace, a modern kitchen with ample dining space, a home office/study, wooden flooring and build-in storage throughout.

Offering access to Brixton, Clapham Common and Clapham North. With various restaurants and shops within close proximity along with Brockwell Park for some open green space.

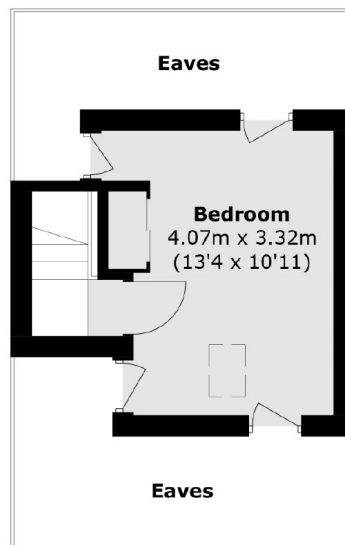
### Features

- Two Double Bedrooms
- Top Floor Flat
- Reception Room
- Open Plan Kitchen
- Home Office/Study
- Wooden Flooring

# Branksome Road, London, SW2



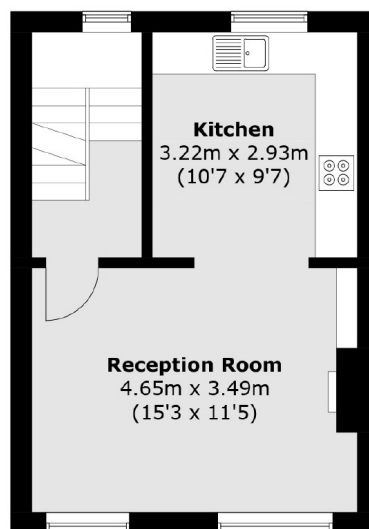
**Second Floor**



**Third Floor**



**Ground Floor**



**First Floor**

Total area (approx.): 82.9 sq. m (892.3 sq. ft)  
(Excluding Eaves)