



## Clapham Road, SW9

£3,700 Per calendar month

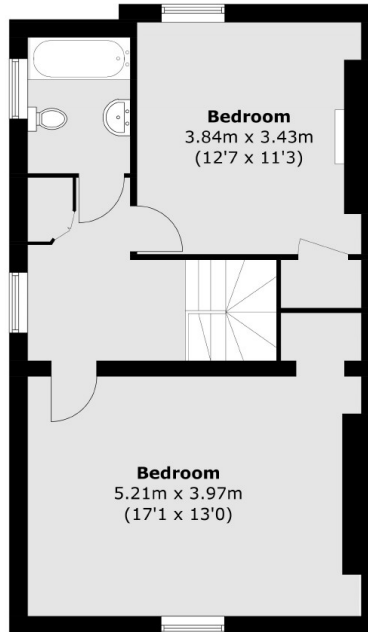
This refurbished three double bedroom conversion is set in a Georgian Townhouse and finished to a high specification throughout and comes highly recommended for professional sharers commuting to Central London.

Situated on Clapham Road, providing enviable access to Clapham North tube and Stockwell tube as well as the High Street's range of bars and restaurants.

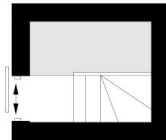
### Features

- Three Double Bedrooms
- Refurbished Flat
- Top Floor Flat
- High Specification
- Wooden Flooring
- Prime Location

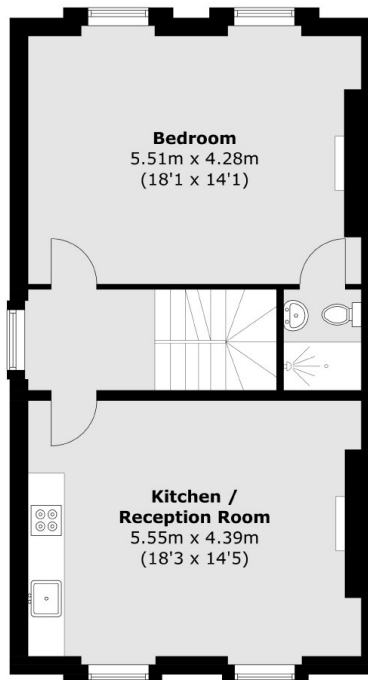
# Clapham Road, London, SW9



**Third Floor**



**First Floor**



**Second Floor**

Total area (approx.): 114.7 sq. m (1,234.6 sq. ft)