



St. Luke's Avenue, SW4

£2,250 Per calendar month

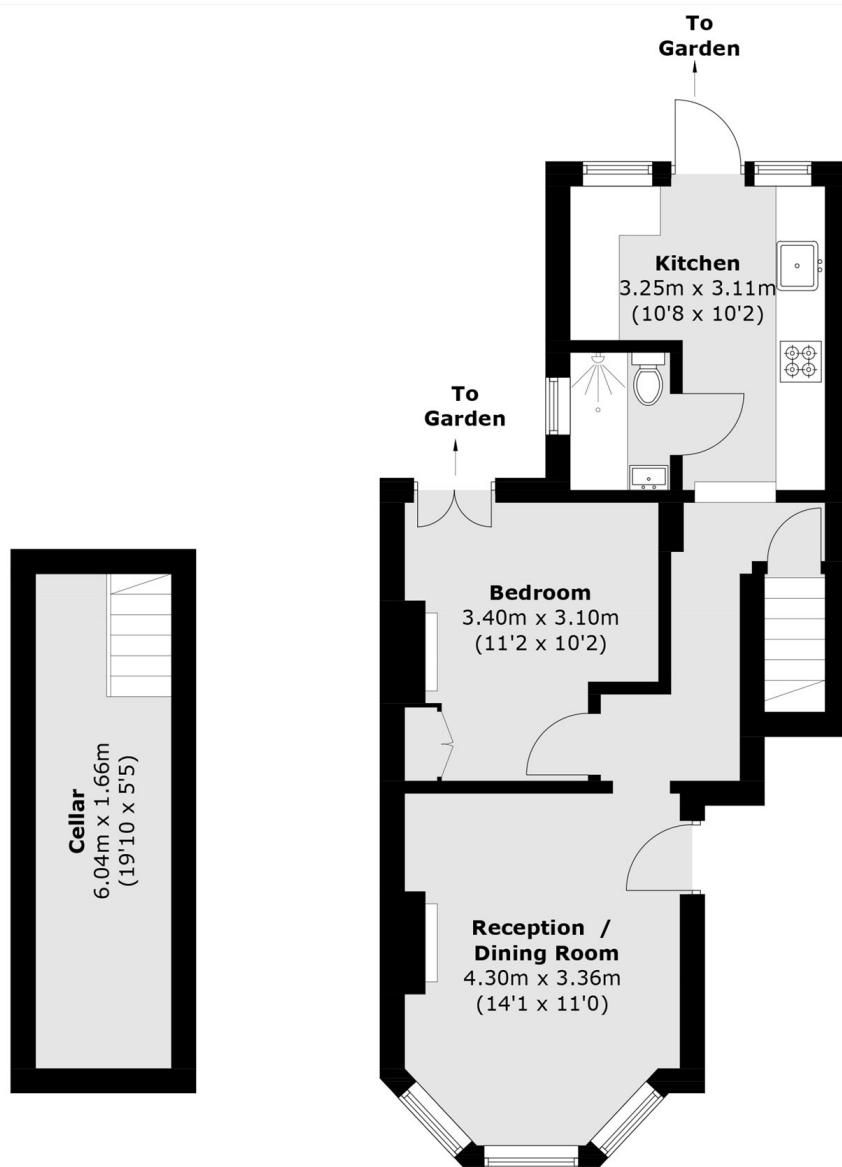
This stylishly presented one bedroom ground floor flat forms part of an attractive Victorian conversion. Offering approximately 583 sq ft of thoughtfully refurbished living space. The property also comes with a private patio garden.

St. Luke's Avenue provides access to the shops, bars and restaurants of Clapham High Street and Clapham Old Town. Clapham Common and two Northern line stations are also very close by.

Features

- Ground Floor Flat
- One Double Bedroom
- Recently Refurbished
- Spacious Reception Room
- Separate Kitchen
- Private Garden

St. Luke's Avenue, London, SW4



Cellar

Ground Floor

Total area (approx.): 52.9 sq. m (569.3 sq. ft)
(Including Cellar)