



St. Luke's Avenue, SW4

£4,000 Per calendar month

A stunning two bedroom apartment within an award winning development offering London skyline views. This penthouse is split over two floors and is finished to a high specification.

Located off Clapham High Street with all its amenities and less than half a mile from both Clapham North and Clapham Common tube.

Features

- Penthouse Apartment
- Two Floors
- Private Roof Terrace
- Walk-In Wardrobe
- Under Floor Heating
- Concierge Service



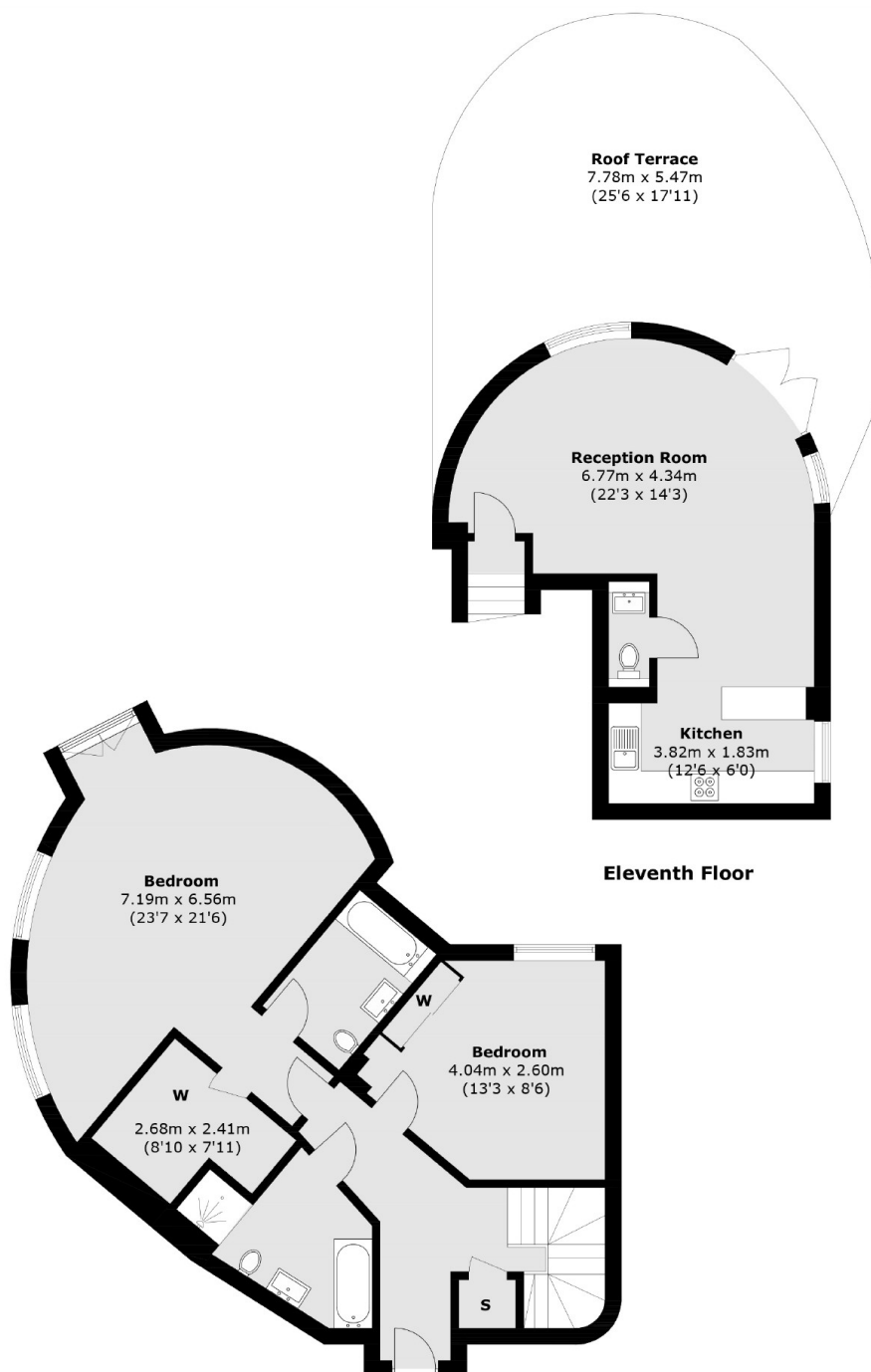
St. Luke's Avenue, SW4

Located on the tenth and eleventh floor, accommodation includes two bedrooms with two bathrooms, a walk-in wardrobe, an open plan reception room, wooden flooring, air conditioning unit and a fully integrated kitchen. This space leads out to a considerable private terrace which offers views of the London Skyline.

Further benefits of this property include underfloor heating, a concierge and two communal roof terraces. You will also be close to the green open spaces of Clapham Common.



St. Luke's Avenue, London, SW4



Tenth Floor
Total area (approx.): 125.9 sq. m (1,355.1 sq. ft)
Roof Terrace: 46.2 sq. m (497.3 sq. ft)