



## St. Luke's Avenue, SW4

£4,000 Per calendar month

A stunning two bedroom apartment within an award winning development offering London skyline views. This penthouse is split over two floors and is finished to a high specification.

Located off Clapham High Street with all its amenities and less than half a mile from both Clapham North and Clapham Common tube.

### Features

- Penthouse Apartment
- Two Floors
- Private Roof Terrace
- Walk-In Wardrobe
- Under Floor Heating
- Concierge Service



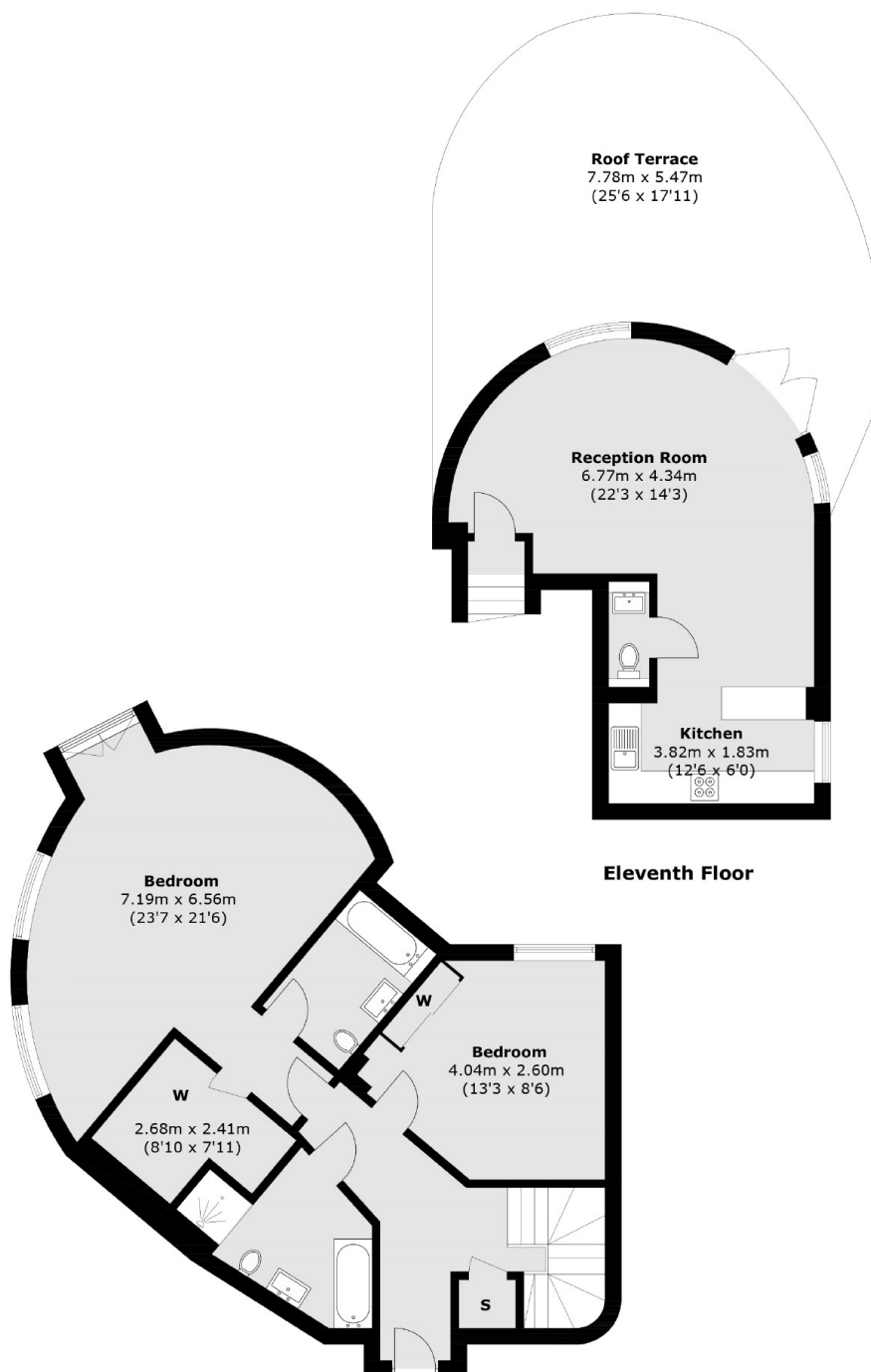
## St. Luke's Avenue, SW4

Located on the tenth and eleventh floor, accommodation includes two bedrooms with two bathrooms, a walk-in wardrobe, an open plan reception room, wooden flooring, air conditioning unit and a fully integrated kitchen. This space leads out to a considerable private terrace which offers views of the London Skyline.

Further benefits of this property include underfloor heating, a concierge and two communal roof terraces. You will also be close to the green open spaces of Clapham Common.



# St. Luke's Avenue, London, SW4



Total area (approx.): 125.9 sq. m (1,355.1 sq. ft)  
Roof Terrace: 46.2 sq. m (497.3 sq. ft)

## Dexters

Clapham High Street  
55 Clapham High Street  
London  
SW4 7TG  
Lettings  
020 7483 6364

Energy Rating: C. We aim to make our particulars both accurate and reliable. However they are not guaranteed; nor do they form part of an offer or contract. If you require clarification on any points then please contact us, especially if you're traveling some distance to view. Please note that appliances and heating systems have not been tested and therefore no warranties can be given as to their good working order.

 **RICS** | Regulated  
Estate Agent  
and Letting Agent

[dexters.co.uk](https://www.dexters.co.uk)