



Voltaire Road, SW4
£650,000

Dexters



Voltaire Road, SW4

This characterful two-bedroom ground-floor period conversion seamlessly combines historic charm with modern comfort. Bathed in natural light, the property boasts two well-proportioned bedrooms, including a spacious principal bedroom at the front, and an open-plan kitchen/living/dining area to the rear. Beyond this, a private south/east-facing cottage garden, planted to bloom spring to autumn, provides a sunny, low-maintenance outdoor space ideal for relaxing or outdoor entertaining.

The property has recently had a main roof replacement and a new Hive controlled boiler installed. Ample storage is supplied by a large cellar.

Its location offers an excellent lifestyle opportunity for professionals, couples, or investors.

Voltaire Road is a quiet residential street just off Clapham High Street, located just moments from the lively Clapham High Street, and the area's wide range of shops and amenities. It offers excellent transport links, with Clapham North Underground station only 0.2 miles away and Clapham High Street Overground just 0.1 miles from the property.

Features

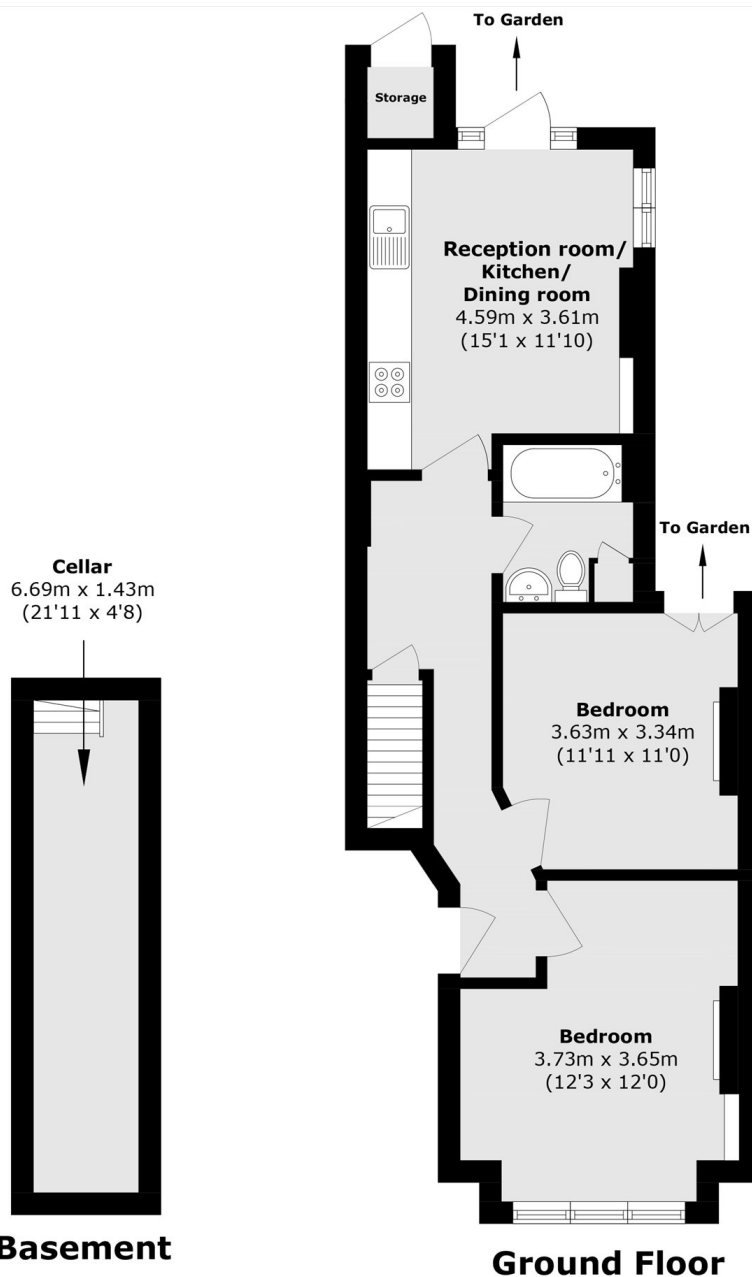
- Share Of Freehold
- Two Double Bedrooms
- Victorian Conversion
- Garden Flat
- South/East Facing Garden







Voltaire Road, London, SW4



Total area (approx.): 65.6 sq. m (706.1 sq. ft)
External storage (approx.): 0.8 sq. m (8.6 sq. ft)

Dexters

Clapham High Street
55 Clapham High Street
London
SW4 7TG
Sales
020 7483 6363

Energy Rating: D. We aim to make our particulars both accurate and reliable. However they are not guaranteed; nor do they form part of an offer or contract. If you require clarification on any points then please contact us, especially if you're traveling some distance to view. Please note that appliances and heating systems have not been tested and therefore no warranties can be given as to their good working order.

 **RICS** | Regulated
Estate Agent
and Letting Agent

[dexters.co.uk](https://www.dexters.co.uk)