



Norwood Road, SE24

£1,800 Per calendar month

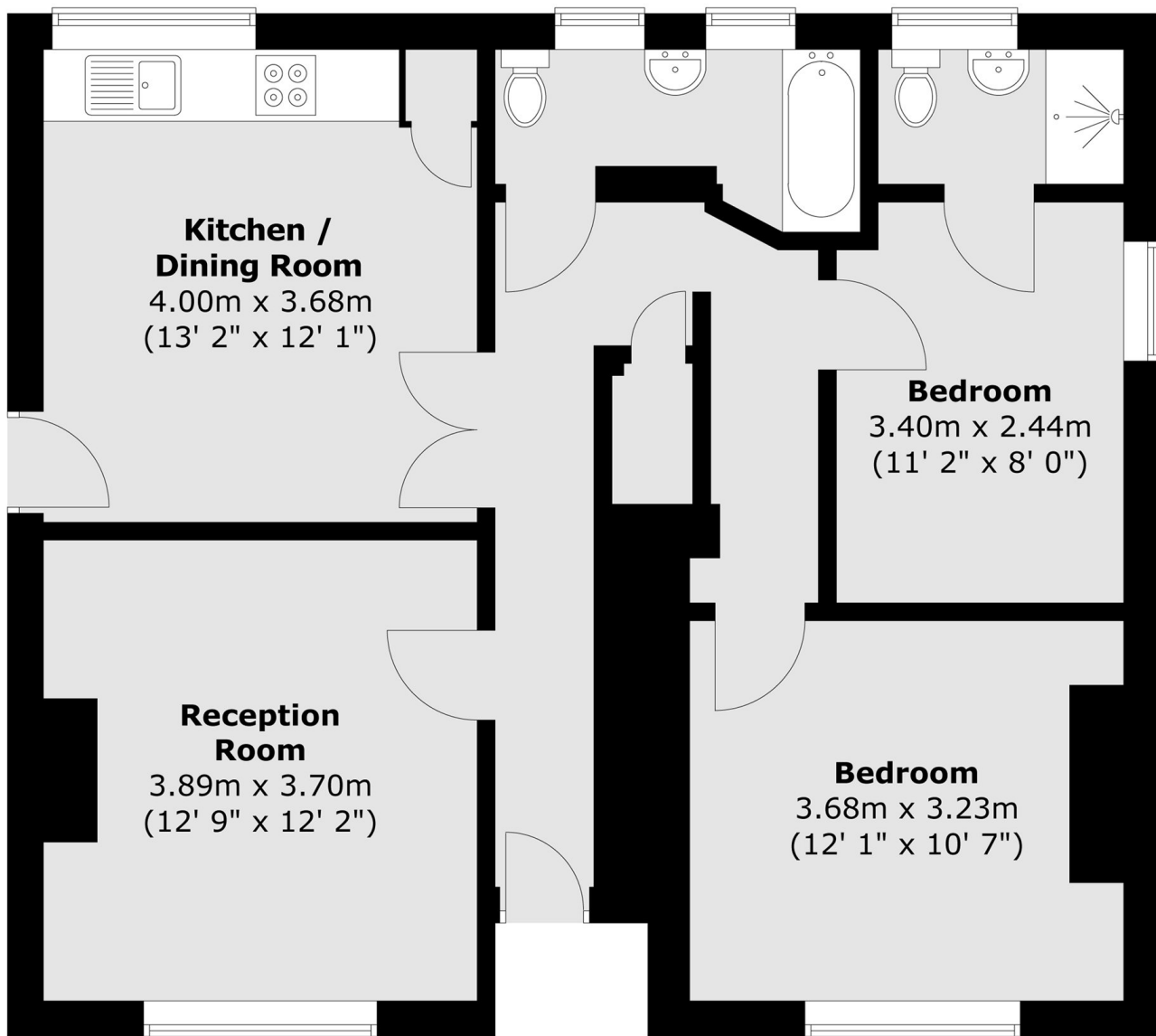
Situated on the ground floor, this two bedroom flat comes with a spacious reception room, a separate kitchen, a private patio garden, two bathrooms, one of which is an en suite and allocated off-street parking. Ideal for a professional couple or two sharers.

Norwood Road is ideally located for the many shops, restaurants and cafés of Herne Hill, the wide green open spaces of Brockwell Park along with Tulse Hill station, just around the corner. Tulse Hill station provides links into London Bridge and Blackfriars.

Features

- Two Double Bedrooms
- Ground Floor Flat
- Spacious Reception Room
- Two Bathrooms
- Private Patio Garden
- Off-Street Parking

Norwood Road, London, SE24



Total area (approx.) : 69 sq. m (743 sq. ft)