



St. Luke's Avenue, SW4

£3,300 Per calendar month

This spacious three double bedroom flat offers neutral interior and storage throughout with a large reception room, separate kitchen and tiled bathroom. Ideal for sharers looking for equal sized bedrooms.

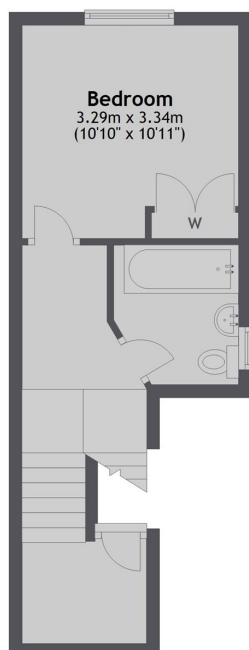
Located just off Clapham High Street with all of its amenities, bars and restaurants and less than half a miles walk from Clapham North underground and Clapham High Street overground stations.

Features

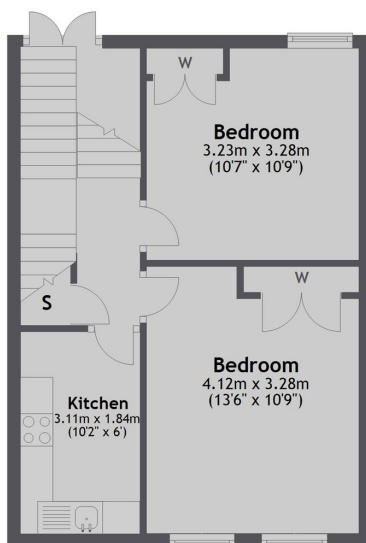
- Three Double Bedrooms
- Spacious Reception
- Separate Kitchen
- Tiled Bathroom
- Generous Storage
- Prime Location

St. Luke's Avenue, London, SW4

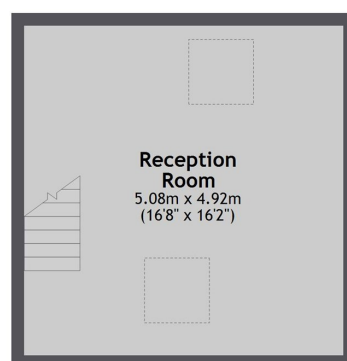
First Floor



Second Floor



Third Floor



Total area: approx. 88.2 sq. metres (949.6 sq. feet)