



## Fitzwilliam Road, SW4

### £825,000

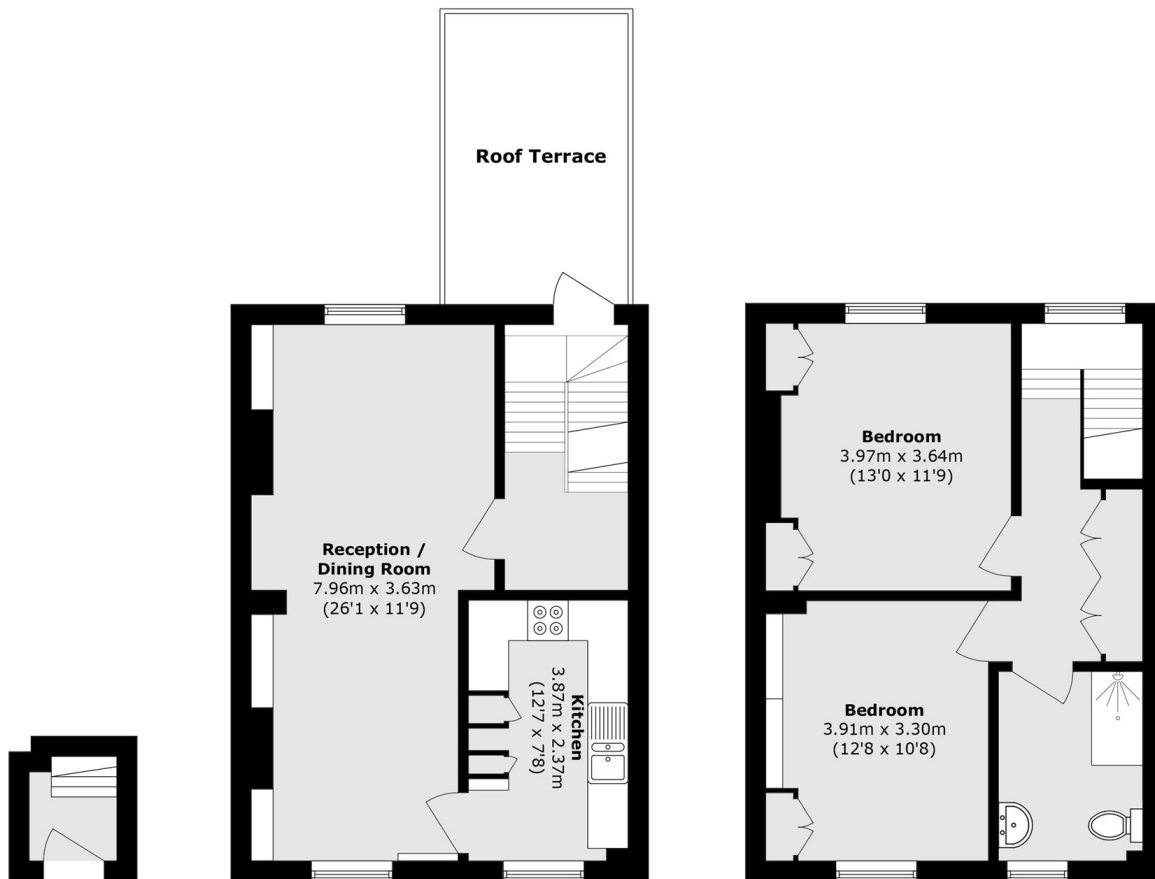
A two double bedroom, split level upper maisonette on Fitzwilliam Road. The property comprises, on the first floor, a spacious full length double reception room spanning the width of the home, along with a separate kitchen. Upstairs, there are two well sized double bedrooms and a bathroom. The property offers plenty of potential, benefits from a share of the freehold, and will be sold chain free.

Fitzwilliam Road is a popular residential street in the heart of Clapham, known for its attractive period homes and quiet, community feel. Ideally located moments from Clapham High Street, residents enjoy easy access to cafés, restaurants and shops, as well as excellent transport links via Clapham North Underground and Clapham High Street Overground. Clapham Common is also a short walk away, offering green space and leisure amenities.

### Features

- Chain Free
- Share of Freehold
- Split Level
- Roof Terrace
- Potential to Extend (STPP)

# Fitzwilliam Road, London, SW4



**Ground Floor**

**First Floor**

**Second Floor**

Total area (approx.): 91.0 sq. m (979.5 sq. ft)  
Roof Terrace area (approx.): 11.7 sq. m (125.9 sq. ft)