



Prideaux Road, SW9

£3,300 Per calendar month

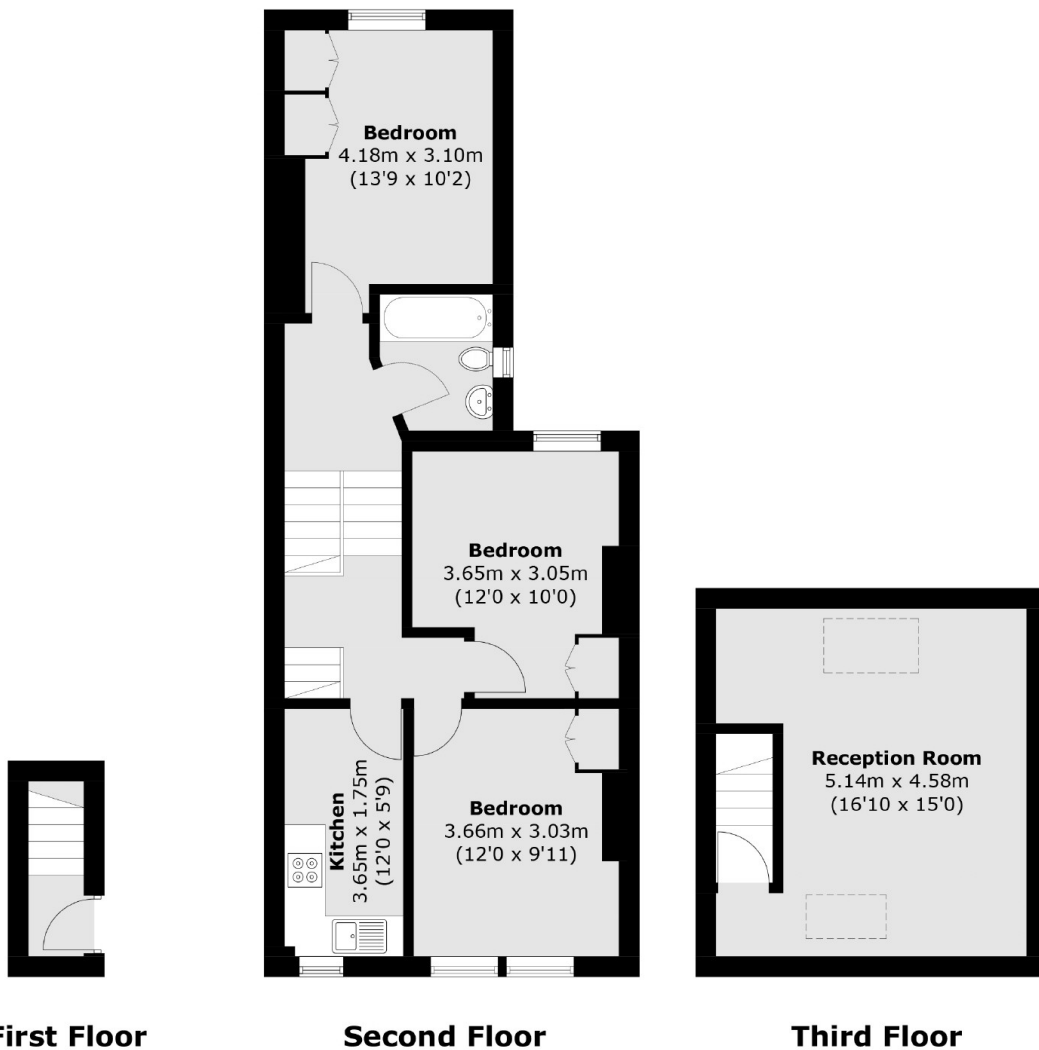
A spacious top floor flat in a converted Victorian house. Offering a reception room, separate kitchen, three double bedrooms and neutral interior throughout. Ideal for professional sharers.

With Clapham High Street, Brixton Village and Stockwell all a short walk away, Prideaux Road is ideally located for young sharers who need easy access to local amenities and the City.

Features

- Three Double Bedrooms
- Spacious Reception Room
- Top Floor Flat
- Separate Kitchen
- Neutral Interior
- Close To Transport

Prideaux Road, London, SW9



Total area (approx.): 81.6 sq. m (878.2 sq. ft)

Dexters

Clapham High Street
55 Clapham High Street
London
SW4 7TG
Lettings
020 7483 6364

Energy Rating: . We aim to make our particulars both accurate and reliable. However they are not guaranteed; nor do they form part of an offer or contract. If you require clarification on any points then please contact us, especially if you're traveling some distance to view. Please note that appliances and heating systems have not been tested and therefore no warranties can be given as to their good working order.

 **RICS** | Regulated
Estate Agent
and Letting Agent

[dexters.co.uk](https://www.dexters.co.uk)