



Santley Street, SW4

£3,350 Per calendar month

Split over two levels, this top floor flat has been finished to a modern specification. Offering an open plan reception room, three large double bedrooms, two bathrooms and wooden flooring.

The property has Clapham North and Brixton tube both half a mile away. Also the ever bustling bars, pubs and restaurants of Clapham High Street.

Features

- Three Double Bedrooms
- Open Plan Reception
- Split-Level Flat
- Two Bathrooms
- Top Floor Flat
- Prime Location



Santley Street, SW4

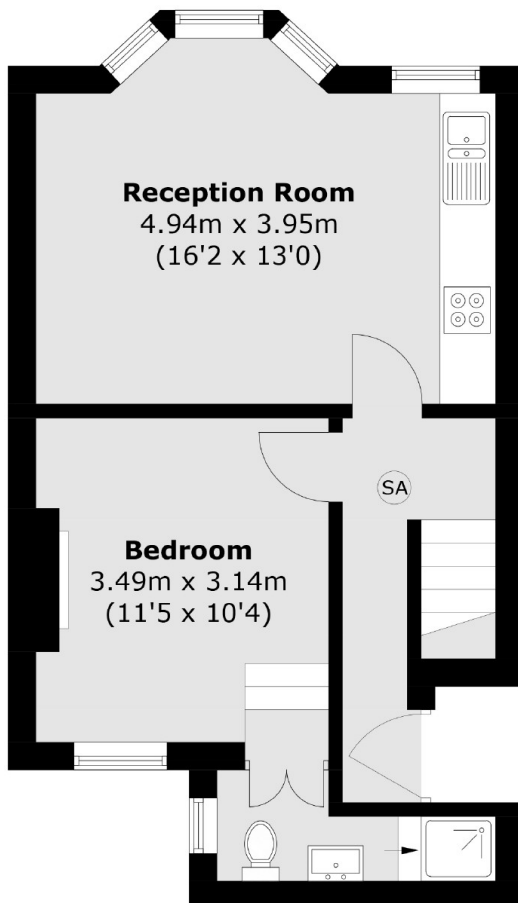
Set in the heart of Clapham, this neutrally decorated flat is ideal for professional sharers.



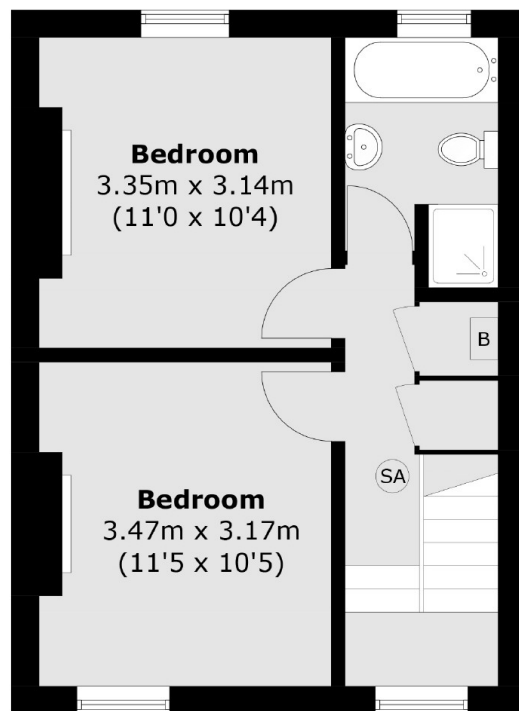
Santley Street, London, SW4

B BOILER

SA COMBINED SMOKE
DETECTOR AND ALARM



First Floor



Second Floor

Total area (approx.): 73.3 sq. m (788.9 sq. ft)

Dexters

Clapham High Street
55 Clapham High Street
London
SW4 7TG
Lettings
020 7483 6364

Energy Rating: E. We aim to make our particulars both accurate and reliable. However they are not guaranteed; nor do they form part of an offer or contract. If you require clarification on any points then please contact us, especially if you're traveling some distance to view. Please note that appliances and heating systems have not been tested and therefore no warranties can be given as to their good working order.

 **RICS** | Regulated
Estate Agent
and Letting Agent

[dexters.co.uk](https://www.dexters.co.uk)